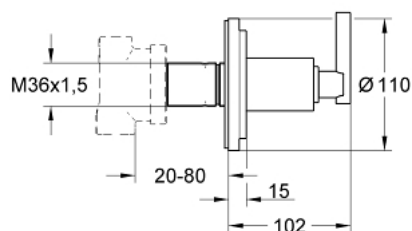


19 134 000 **ATRIO 5-WAY DIVERTER**

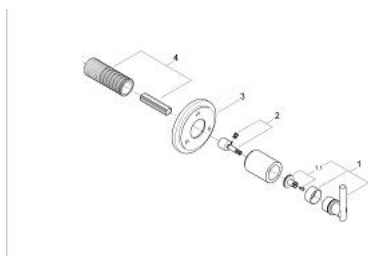


PRODUCT DESCRIPTION

- Colour: chrome
- set for final installation (for 29 708 000)
- without concealed body
- GROHE Long-Life finish
- escutcheon with wall sealing
- screwable
- with Jota handle



19 134 000 **ATRIO 5-WAY DIVERTER**



SPARE PARTS, January 2000 – now

- 1: Handle Jota (Order-nr. 45609000)
- 1.1: Replacement handle connection kit (Order-nr. 45605000)
- 2: Extension (Order-nr. 45611000)
- 3: Escutcheon (Order-nr. 45613000)
- 4: Flush pipe extension (Order-nr. 45439000)