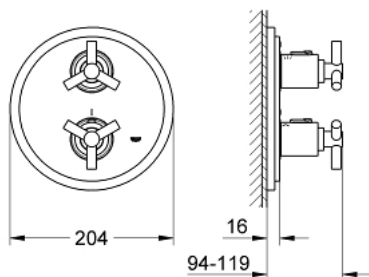


## 19 395 000 ATRIO THERMOSTAT WITH INTEGRATED 2-WAY DIVERTER FOR BATH OR SHOWER WITH MORE THAN ONE OUTLET

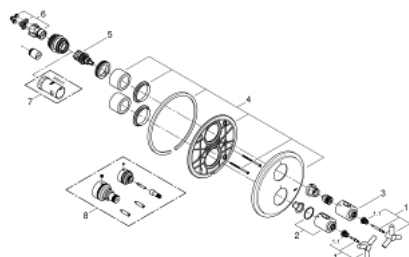


### PRODUCT DESCRIPTION

- Colour: chrome
- set for final installation for
- 35 050 000
- without concealed body
- GROHE Long-Life finish
- GROHE SafeStop safety button at 38°C ( calibration required )
- Aquadimmer with multiple function
- shut off and flow control
- diverter for 2 outlets
- escutcheon- and shaft-sealing
- wall escutcheon
- covered fixing
- with Ypsilon handle



## 19 395 000 ATRIO THERMOSTAT WITH INTEGRATED 2-WAY DIVERTER FOR BATH OR SHOWER WITH MORE THAN ONE OUTLET



### SPARE PARTS, April 2014 – now

- 1: Handle Atrio Ypsilon (Order-nr. 47289000)
- 1.1: Snap insert (Order-nr. 08943000)
- 2: Temperature scale handle (Order-nr. 06676000)
- 3: Handle for shut-off valve (Order-nr. 06654000)
- 4: Escutcheon (Order-nr. 47326000)
- 5: Aquadimmer (Order-nr. 47364000)
- 6: Adapter (Order-nr. 12701000)
- 7: Socket spanner (Order-nr. 19332000)\*
- 8: Extension set 27.5 mm (Order-nr. 47781000)\*

\*Special accessories