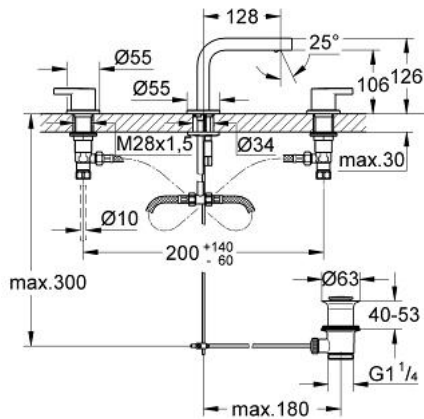


## 20 304 000 LINEARE THREE-HOLE BASIN MIXER 1/2" S-SIZE

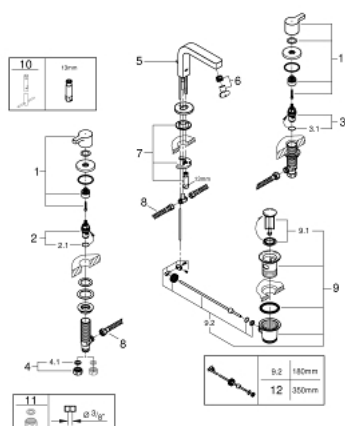


### PRODUCT DESCRIPTION

- Colour: chrome
- ceramic headparts 1/2", 90°
- GROHE Long-Life finish
- GROHE FastFixation installation system
- pop-up waste set 1 1/4"
- pressure-proof, flexible connection hoses between spout and side valves



## 20 304 000 LINEARE THREE-HOLE BASIN MIXER 1/2" S-SIZE



### SPARE PARTS, May 2017 – now

- 1: Handle pair (Order-nr. 48316000)
  - 2: Ceramic headpart, 1/2" (Order-nr. 45882000)
  - 2.1: O-Ring Ø18,2 x Ø1,7 (Order-nr. 0392400M)
  - 3: Ceramic headpart, 1/2" (Order-nr. 45883000)
  - 3.1: O-Ring Ø18,2 x Ø1,7 (Order-nr. 0392400M)
  - 4: Coupling nut 1/2" x 14.5 mm (Order-nr. 1290200M)
  - 4.1: Fibre seal dia. Ø 18,5 x Ø 12 x 2 (Order-nr. 0138900M)
  - 5: Pop-up rod (Order-nr. 65196000)
  - 6: Flow restrictor (Order-nr. 13994000)
  - 7: Shank fastening assembly (Order-nr. 46671000)
  - 8: Flexible hose (Order-nr. 45442000)
  - 9: Pop-up waste set 1 1/4" (Order-nr. 28910000)
  - 9.1: Chrome bath plug (Order-nr. 07182000)
  - 9.2: Eccentric rod (Order-nr. 07052000)
  - 10: Mounting wrench (Order-nr. 19017000)\*
  - 11: Coupling nut 1/2" x 10.5 mm (Order-nr. 1290100M)\*
  - 12: Eccentric rod (Order-nr. 07341000)\*
- \*Special accessories