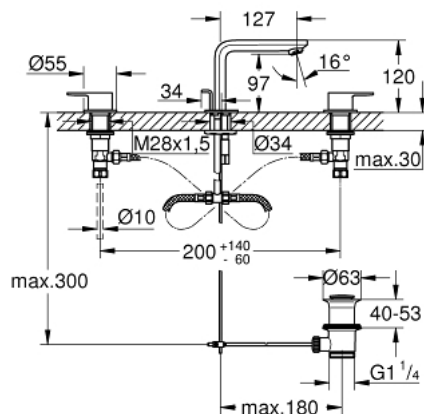
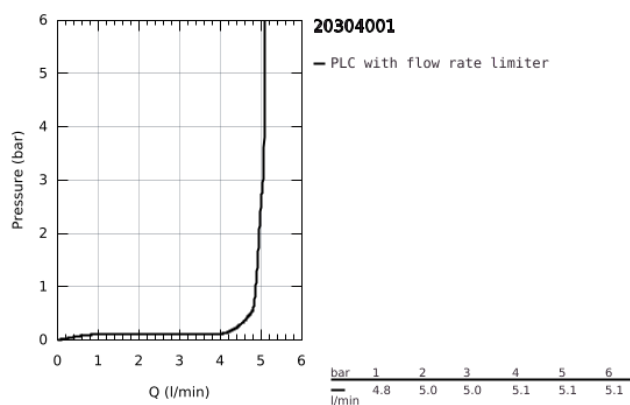


20 304 001 LINEARE THREE-HOLE BASIN MIXER 1/2" M-SIZE

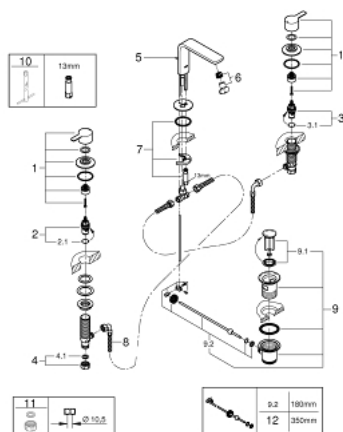


PRODUCT DESCRIPTION

- Colour: chrome
- metal lever
- ceramic headparts 1/2", 90°
- GROHE Long-Life finish
- GROHE Water Saving - Less water, perfect flow
- maximum flow rate (at 3 bar): 5 l/min
- GROHE FastFixation installation system
- pop-up waste set 1 1/4"
- pressure-proof, flexible connection hoses between spout and side valves
- min. recommended pressure 1.0 bar
- union nut 1/2" x 10.5 mm



20 304 001 LINEARE THREE-HOLE BASIN MIXER 1/2" M-SIZE



SPARE PARTS, July 2016 – now

- 1: Handle pair (Order-nr. 48357000)
- 2: Ceramic headpart, 1/2" (Order-nr. 45882000)
- 2.1: O-Ring Ø18,2 x Ø1,7 (Order-nr. 0392400M)
- 3: Ceramic headpart, 1/2" (Order-nr. 45883000)
- 3.1: O-Ring Ø18,2 x Ø1,7 (Order-nr. 0392400M)
- 4: Coupling nut 1/2" x 14.5 mm (Order-nr. 1290200M)
- 4.1: Fibre seal dia. Ø 18,5 x Ø 12 x 2 (Order-nr. 0138900M)
- 5: Pop-up rod (Order-nr. 65196000)
- 6: Flow restrictor (Order-nr. 13994000)
- 7: Shank fastening assembly (Order-nr. 46671000)
- 8: Flexible connection hose (Order-nr. 45704000)
- 9: Pop-up waste set 1 1/4" (Order-nr. 28910000)
- 9.1: Chrome bath plug (Order-nr. 07182000)
- 9.2: Eccentric rod (Order-nr. 07052000)
- 10: Mounting wrench (Order-nr. 19017000)*
- 11: Coupling nut 1/2" x 10.5 mm (Order-nr. 1290100M)*
- 12: Eccentric rod (Order-nr. 07341000)*

*Special accessories