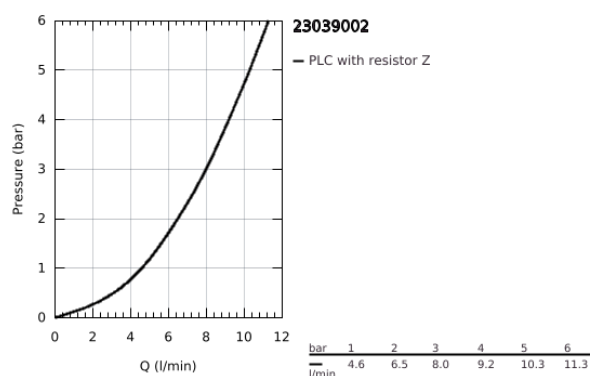
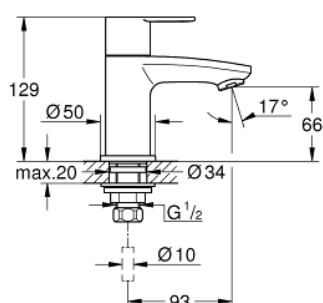


23 039 002 **EUROSTYLE COSMOPOLITAN PILLAR TAP**  
**XS-SIZE**



## PRODUCT DESCRIPTION

- Colour: chrome
- monobloc installation
- metal lever
- ceramic headpart
- GROHE Long-Life finish
- mousseur
- min. recommended pressure 1.0 bar
- noise classification 1 in accordance with DIN4109
- union nut 1/2" x 10.5 mm



## 23 039 002 EUROSTYLE COSMOPOLITAN PILLAR TAP XS-SIZE



### SPARE PARTS, March 2010 – now

- 1: Handle (Order-nr. 48067000)
  - 1.1: Replacement handle connection kit (Order-nr. 45186000)
  - 1.1.1: O-Ring Ø18,2 x Ø1,7 (Order-nr. 0392400M)
  - 2: Ceramic headpart, 1/2" (Order-nr. 45882000)
  - 2.1: O-Ring Ø18,2 x Ø1,7 (Order-nr. 0392400M)
  - 3: Economy Mousseur (Order-nr. 13951000)
  - 4: Shank fastening assembly (Order-nr. 45000000)
  - 5: Coupling nut 1/2" x 10.5 mm (Order-nr. 1290100M)
  - 5.1: Fibre seal dia. Ø 18,5 x Ø 12 x 2 (Order-nr. 0138900M)
  - 6: Coupling nut 1/2" x 14.5 mm (Order-nr. 1290200M)\*
- \*Special accessories