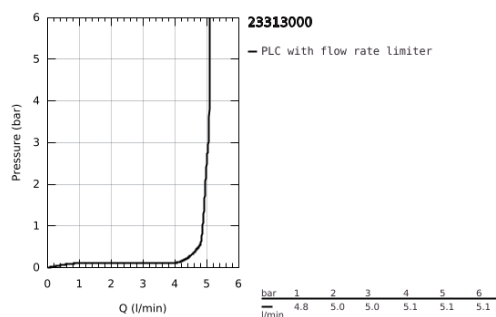
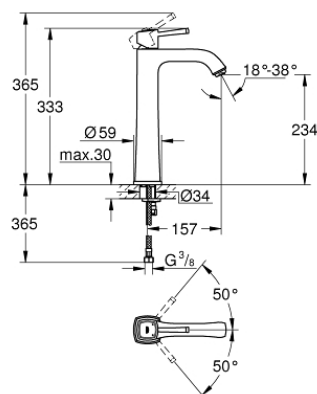


## 23 313 000 GRANDERA BASIN MIXER 1/2" XL-SIZE



### PRODUCT DESCRIPTION

- Colour: chrome
- for free-standing basins
- 28 mm ceramic cartridge with GROHE SilkMove
- temperature limiter
- GROHE Long-Life finish
- GROHE Water Saving - Less water, perfect flow
- GROHE FastFixation installation system
- GROHE AquaGuide adjustable mousseur 5.7 l/min
- smooth body
- flexible connection hoses
- min. recommended pressure 1.0 bar



23 313 000 **GRANDERA BASIN MIXER 1/2"**  
**XL-SIZE**



**SPARE PARTS**, June 2012 – now

- 1: Lever (Order-nr. 46836000)
- 2: retaining ring (Order-nr. 46715000)
- 3: Cartridge (Order-nr. 46580000)
- 4: Flow straightener (Order-nr. 46837000)
- 5: Shank fastening assembly (Order-nr. 46671000)
- 6: Mounting wrench (Order-nr. 19017000)\*

\*Special accessories