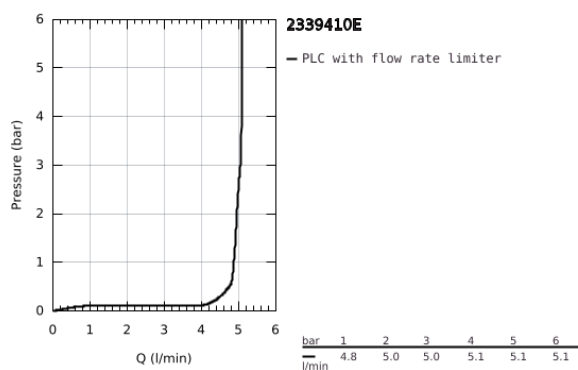
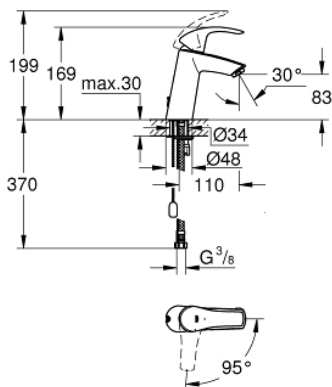


## 23 394 10E EUROSMART BASIN MIXER 1/2" M-SIZE

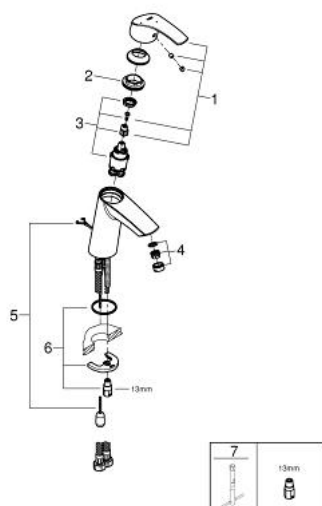


### PRODUCT DESCRIPTION

- Colour: chrome
- monobloc installation
- metal lever
- GROHE SilkMove Energy Saving 28 mm ceramic cartridge with energy saving function via cold start
- with temperature limiter
- GROHE Long-Life finish
- GROHE Water Saving - Less water, perfect flow
- maximum flow rate (at 3 bar): 5 l/min
- GROHE FastFixation installation system
- retractable chain
- flexible connection hoses



23 394 10E **EUROSMART BASIN MIXER 1/2"**  
**M-SIZE**



**SPARE PARTS**, December 2012 – now

- 1: Lever (Order-nr. 46865000)
- 2: retaining ring (Order-nr. 46715000)
- 3: Cartridge (Order-nr. 46580000)
- 4: Flow restrictor (Order-nr. 48159000)
- 5: Chain support (Order-nr. 06815000)
- 6: Shank fastening assembly (Order-nr. 46249000)
- 7: Mounting wrench (Order-nr. 19017000)\*

\*Special accessories