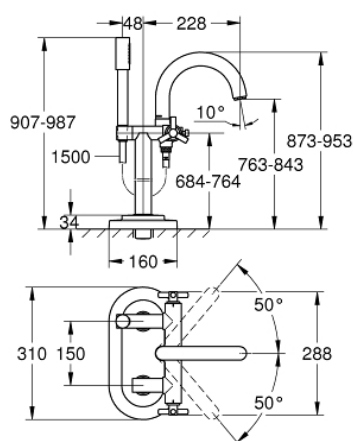


25 044 000 ATRIO BATH / SHOWER MIXER 1/2"



PRODUCT DESCRIPTION

- Colour: chrome
- floor-mounted installation with high pillar unions (765 mm)
- ceramic headparts 1/2", 90°
- GROHE Long-Life finish
- automatic diverter: bath/shower
- swivel tubular spout with mousseur and stop limiter
- projection 228 mm
- integrated non-return valve in the shower outlet 1/2"
- Sena handshower
- with shower holder
- shower hose 1500 mm
- protected against backflow
- must be used with
- 45 473 000 floor installation plate
- without roughing-in-set
- with Ypsilon handle



25 044 000 **ATRIO BATH / SHOWER MIXER 1/2"**



SPARE PARTS, October 2018 – now

- 1: Handle Atrio Ypsilon (Order-nr. 45603000)
- 1.1: Replacement handle connection kit (Order-nr. 45605000)
- 2: Ceramic headpart, 1/2" (Order-nr. 45882000)
- 2.1: O-Ring Ø18,2 x Ø1,7 (Order-nr. 0392400M)
- 3: Diverter (Order-nr. 45592000)
- 4: Repl.kit f.cast spout (Order-nr. 45474000)
- 4.1: Safety disc (Order-nr. 0585000M)
- 5: Non-return valve (Order-nr. 08565000)
- 6: Strainer (Order-nr. 0700200M)
- 7: Shower holder (Order-nr. 45861000)
- 7.1: screw & o-ring set (Order-nr. 0311700M)
- 8: screw & o-ring set (Order-nr. 0311700M)
- 9: Flow restrictor (Order-nr. 13939000)