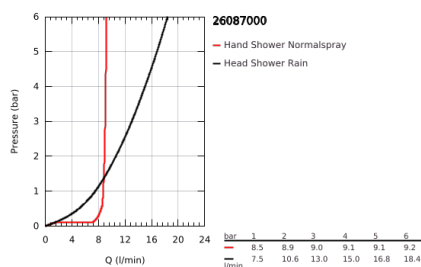


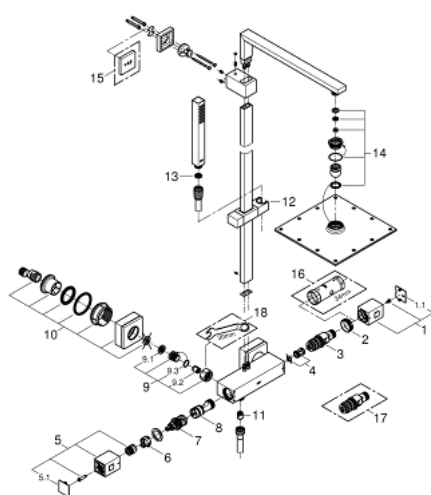
26 087 000 EUPHORIA CUBE SYSTEM 230 SHOWER SYSTEM WITH THERMOSTATIC MIXER FOR WALL MOUNTING



PRODUCT DESCRIPTION

- Colour: chrome
- consisting of:
 - shower arm
 - projection 400 mm
 - exposed thermostatic shower with Aquadimmer function
 - allows change between:
 - Rainshower head shower (27 479 000)
 - material: metal
 - Rain spray pattern
 - with ball joint
 - rotation angle $\pm 15^\circ$
 - hand shower Euphoria Cube (27 699)
 - maximum flow rate (at 3 bar): 13 l/min
 - adjustable height via gliding element
 - Silverflex shower hose 1750 mm 1/2" x 1/2" (28 388 000)
 - GROHE TurboStat compact cartridge with wax thermoelement
 - GROHE Water Saving - Less water, perfect flow
 - GROHE SafeStop safety button at 38°C (calibration required)
 - GROHE SafeStop Plus optional temperature limiter at 43°C included
 - GROHE DreamSpray perfect spray pattern
 - GROHE Long-Life finish
 - SpeedClean anti-limescale system
 - TwistStop preventing the hose from twisting
 - suitable for instantaneous heaters from 18 kW/h
 - minimum flow rate 5 l/min.

26 087 000 EUPHORIA CUBE SYSTEM 230 SHOWER SYSTEM WITH THERMOSTATIC MIXER FOR WALL MOUNTING



SPARE PARTS, January 2013 – now

- 1: Temperature control handle (Order-nr. 47958000)
- 1.1: Cover Cap (Order-nr. 4795900M)
- 2: retaining ring (Order-nr. 47743000)
- 3: Thermostatic compact cartridge 1/2" (Order-nr. 47439000)
- 4: Sound absorber (Order-nr. 47398000)
- 5: Shut-off handle (Order-nr. 47960000)
- 5.1: Cover Cap (Order-nr. 4795900M)
- 6: Stop ring (Order-nr. 47965000)
- 7: Aquadimmer (Order-nr. 12433000)
- 8: Water flow (Order-nr. 47751000)
- 9: Non-return valve (Order-nr. 47189000)
- 9.1: Dirt strainer (Order-nr. 0726400M)
- 9.2: Non-return valve (Order-nr. 08565000)
- 9.3: O-Ring Ø17 x Ø2 (Order-nr. 0305500M)
- 10: S-union (Order-nr. 47824000)
- 11: Non-return valve (Order-nr. 08565000)
- 12: Sliding piece (Order-nr. 48180000)
- 13: Strainer (Order-nr. 0700200M)
- 14: Inlet valve assembly (Order-nr. 45933000)
- 15: Spacer (Order-nr. 27933000)*
- 16: Socket spanner (Order-nr. 19332000)*
- 17: GROHE TurboStat cartridge 1/2" (Order-nr. 47175000)*
- 18: Special spanner (Order-nr. 19377000)*

*Special accessories