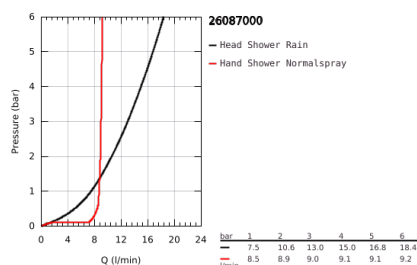


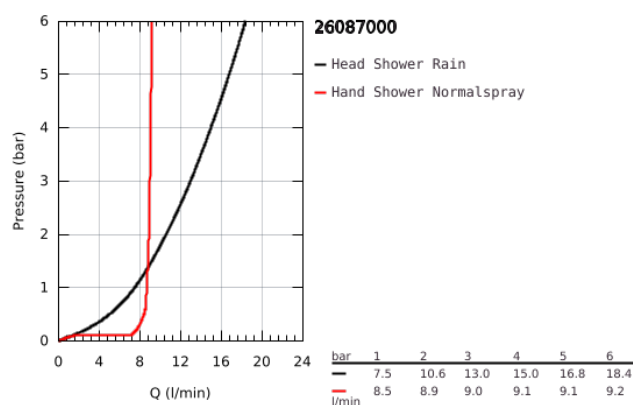
26 087 000 EUPHORIA CUBE SYSTEM 230 SHOWER SYSTEM WITH THERMOSTATIC MIXER FOR WALL MOUNTING



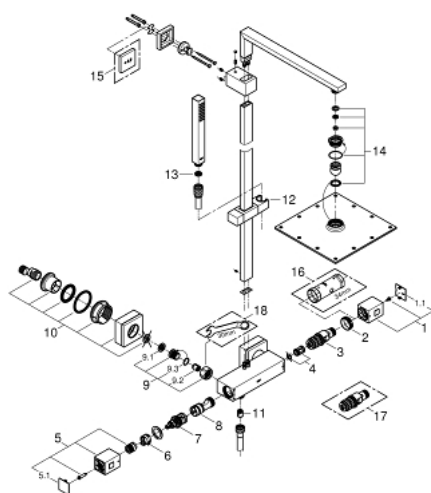
PRODUCT DESCRIPTION

- Colour: chrome
- consisting of:
- shower arm
- projection 400 mm
- exposed thermostatic shower with Aquadimmer function
- allows change between:
- Rainshower head shower (27 479 000)
- material: metal
- Rain spray pattern
- with ball joint
- rotation angle $\pm 15^\circ$
- hand shower Euphoria Cube (27 699)
- adjustable height via gliding element
- Silverflex shower hose 1750 mm (28 388 000)
- GROHE Water Saving - Less water, perfect flow
- GROHE TurboStat compact cartridge with wax thermoelement
- GROHE SafeStop safety button at 38°C (calibration required)
- GROHE SafeStop Plus optional temperature limiter at 43°C included
- GROHE DreamSpray perfect spray pattern
- GROHE Long-Life finish
- SpeedClean anti-limescale system
- TwistStop preventing the hose from twisting
- suitable for instantaneous heaters from 18 kW/h
- minimum flow rate 7 l/min.

26 087 000 EUPHORIA CUBE SYSTEM 230 SHOWER SYSTEM WITH THERMOSTATIC MIXER FOR WALL MOUNTING



26 087 000 EUPHORIA CUBE SYSTEM 230 SHOWER SYSTEM WITH THERMOSTATIC MIXER FOR WALL MOUNTING



SPARE PARTS, January 2013 – now

- 1: Temperature control handle (Order-nr. 47958000)
- 1.1: Cover Cap (Order-nr. 4795900M)
- 2: retaining ring (Order-nr. 47743000)
- 3: Thermostatic compact cartridge 1/2" (Order-nr. 47439000)
- 4: Sound absorber (Order-nr. 47398000)
- 5: Shut-off handle (Order-nr. 47960000)
- 5.1: Cover Cap (Order-nr. 4795900M)
- 6: Stop ring (Order-nr. 47965000)
- 7: Aquadimmer (Order-nr. 12433000)
- 8: Water flow (Order-nr. 47751000)
- 9: Non-return valve (Order-nr. 47189000)
- 9.1: Dirt strainer (Order-nr. 0726400M)
- 9.2: Non-return valve (Order-nr. 08565000)
- 9.3: O-Ring Ø17 x Ø2 (Order-nr. 0305500M)
- 10: S-union (Order-nr. 47824000)
- 11: Non-return valve (Order-nr. 08565000)
- 12: Sliding piece (Order-nr. 48180000)
- 13: Strainer (Order-nr. 0700200M)
- 14: Inlet valve assembly (Order-nr. 45933000)
- 15: Spacer (Order-nr. 27933000)*
- 16: Socket spanner (Order-nr. 19332000)*
- 17: GROHE TurboStat cartridge 1/2" (Order-nr. 47175000)*
- 18: Special spanner (Order-nr. 19377000)*

*Special accessories