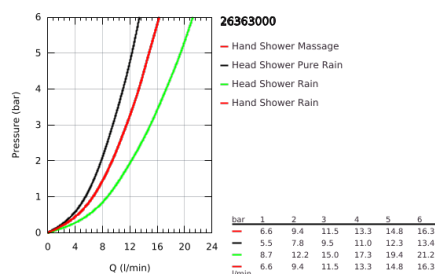
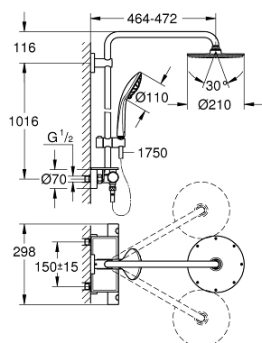


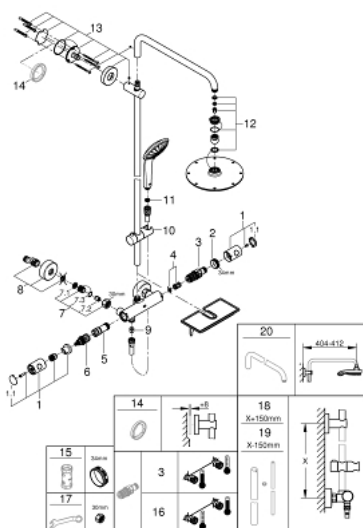
26 363 000 EUPHORIA SYSTEM 210 SHOWER SYSTEM WITH THERMOSTAT FOR WALL MOUNTING



PRODUCT DESCRIPTION

- Colour: chrome
- consisting of:
 - horizontal swivable 450 mm projection shower arm
 - exposed thermostatic shower with Aquadimmer function
 - allows change between:
 - metal head shower Rainshower Cosmopolitan 210 (28 368 000)
 - Rain spray pattern
 - with ball joint
 - rotation angle $\pm 15^\circ$
- hand shower Euphoria 110 Massage (27 221 000)
- adjustable height via gliding element
- Silverflex shower hose 1750 mm 1/2" x 1/2" (28 388 000)
- GROHE EasyReach tray (26 362 LN0)
- minimum flow rate 7 l/min.
- GROHE DreamSpray perfect spray pattern
- GROHE Long-Life finish
- GROHE TurboStat compact cartridge with wax thermoelement
- GROHE SafeStop safety button at 38°C (calibration required)
- GROHE SafeStop Plus optional temperature limiter at 43°C included
- SpeedClean anti-limescale system
- Inner WaterGuide for a longer life
- TwistStop preventing the hose from twisting
- suitable for instantaneous heaters from 18 kW/h

26 363 000 EUPHORIA SYSTEM 210 SHOWER SYSTEM WITH THERMOSTAT FOR WALL MOUNTING



SPARE PARTS, July 2017 – now

- 1: Metal handle 1/2" (Order-nr. 47984000)
 - 1.1: Cover Cap (Order-nr. 6458500M)
 - 2: retaining ring (Order-nr. 47743000)
 - 3: Thermostatic compact cartridge 1/2" (Order-nr. 47439000)
 - 4: Sound absorber (Order-nr. 47398000)
 - 5: Water flow (Order-nr. 47751000)
 - 6: Aquadimmer (Order-nr. 12433000)
 - 7: Non-return valve (Order-nr. 47189000)
 - 7.1: Dirt strainer (Order-nr. 0726400M)
 - 7.2: Non-return valve (Order-nr. 08565000)
 - 7.3: O-Ring Ø17 x Ø2 (Order-nr. 0305500M)
 - 8: S-union (Order-nr. 12662000)
 - 9: Non-return valve (Order-nr. 08565000)
 - 10: Sliding piece (Order-nr. 12140000)
 - 11: Strainer (Order-nr. 0700200M)
 - 12: Inlet valve assembly (Order-nr. 45933000)
 - 13: Outlet shower holder (Order-nr. 48279000)
 - 14: Spacer (Order-nr. 27180000)*
 - 15: Socket spanner (Order-nr. 19332000)*
 - 16: GROHE TurboStat cartridge 1/2" (Order-nr. 47175000)*
 - 17: Special spanner (Order-nr. 19377000)*
 - 18: Shower system pipe for retrofitting (Order-nr. 48053000)*
 - 19: Shower system pipe for retrofitting (Order-nr. 48054000)*
 - 20: Shower arm for shower systems (Order-nr. 14047000)*
- *Special accessories