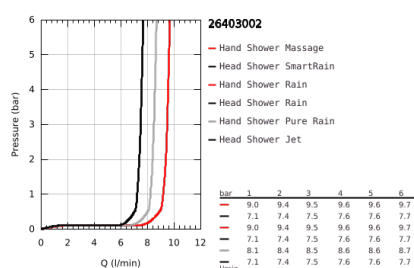
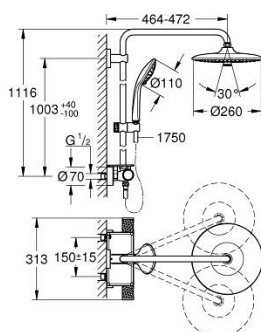


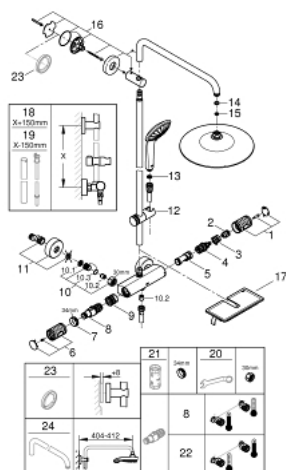
26 403 002 VITALIO JOY SYSTEM 260 SHOWER SYSTEM WITH THERMOSTATIC MIXER FOR WALL MOUNTING



PRODUCT DESCRIPTION

- Colour: chrome
- consisting of:
 - horizontal swivable 450 mm projection shower arm
 - exposed Precision thermostatic mixer with Aquadimmer function
 - allows change between:
 - head shower Vitalio Joy 260 (26 462)
 - 3 spray patterns:
 - Rain, SmartRain, Jet
 - with ball joint
 - rotation angle $\pm 15^\circ$
 - hand shower Vitalio Joy 110 Massage (27 319)
 - 3 spray patterns:
 - Rain, Massage, SmartRain
 - adjustable height via gliding element
 - shower hose VitalioFlex Silver 1750 mm, 1/2" x 1/2" (27 506)
 - GROHE EasyReach tray
 - GROHE TurboStat compact cartridge with wax thermoelement
 - GROHE SafeStop safety button at 38°C (calibration required)
 - GROHE SafeStop Plus optional temperature limiter at 43°C included
 - GROHE CoolTouch prevents scalding on hot surfaces
 - GROHE ProGrip with knurl structure
 - GROHE DreamSpray perfect spray pattern
 - GROHE Long-Life finish
 - GROHE Water Saving 9.5 l/min flow limiter
 - GROHE SprayDimmer (Stepless flow rate reduction)
 - GROHE FastFixation upper bracket adjustable
 - Inner WaterGuide for a longer life
 - SpeedClean anti-limescale system
 - TwistStop preventing the hose from twisting
 - suitable for instantaneous heaters from 18 kW/h
 - minimum flow rate 7 l/min.
 - GROHE QuickSpanner included in chrome variant only
 - Consumer edition

26 403 002 VITALIO JOY SYSTEM 260 SHOWER SYSTEM WITH THERMOSTATIC MIXER FOR WALL MOUNTING



SPARE PARTS, January 2020 – now

- 1: Shut-off handle (Order-nr. 49162000)
- 2: Stop ring (Order-nr. 47986000)
- 3: Stop ring (Order-nr. 47965000)
- 4: Aquadimmer (Order-nr. 47364000)
- 5: Water flow (Order-nr. 47887000)
- 6: Shut-off handle (Order-nr. 49160000)
- 7: retaining ring (Order-nr. 47743000)
- 8: Thermostatic compact cartridge 1/2" (Order-nr. 47439000)
- 9: Race (Order-nr. 47975000)
- 10: Non-return valve (Order-nr. 47189000)
- 10.1: Dirt strainer (Order-nr. 0726400M)
- 10.2: Non-return valve (Order-nr. 08565000)
- 10.3: O-Ring Ø17 x Ø2 (Order-nr. 0305500M)
- 11: S-union (Order-nr. 12662000)
- 12: Sliding piece (Order-nr. 48424000)
- 13: Strainer (Order-nr. 0700200M)
- 14: Fibre seal dia. Ø 18,5 x Ø 12 x 2 (Order-nr. 0138900M)
- 15: Strainer (Order-nr. 48007000)
- 16: Outlet shower holder (Order-nr. 48279000)
- 17: GROHE EasyReach tray (Order-nr. 26362LN1)
- 18: Shower system pipe for retrofitting (Order-nr. 48514000)*
- 19: Shower system pipe for retrofitting (Order-nr. 48515000)*
- 20: Special spanner (Order-nr. 19377000)*
- 21: Socket spanner (Order-nr. 19332000)*
- 22: GROHE TurboStat cartridge 1/2" (Order-nr. 47175000)*
- 23: Spacer (Order-nr. 27180000)*
- 24: Shower arm for shower systems (Order-nr. 14047000)*

*Special accessories