

- Colour: chrome
- consisting of:
 - horizontal swivable 390 mm projection shower arm
 - exposed thermostatic shower with Aquadimmer function
 - allows change between:
 - Rain
 - head shower with white rear cover
 - with ball joint
 - rotation angle $\pm 10^\circ$
 - bath inlet
 - separate diverter for hand shower
 - hand shower Tempesta 110 (27 597)
 - 2 spray patterns:
 - Rain, Jet
 - adjustable height via gliding element
- RotaflexTwistStop shower hose 1750 mm 1/2" x 1/2" (28 410)
- maximum flow rate (at 3 bar): 7.3 l/min
- GROHE Water Saving - Less water, perfect flow
- GROHE TurboStat compact cartridge with wax thermoelement
- GROHE SafeStop safety button at 38°C (calibration required)
- GROHE SafeStop Plus optional temperature limiter at 43°C included
- GROHE SmartSwitch - easily rotate the dial to enjoy your preferred spray option
- GROHE DreamSpray perfect spray pattern
- ShockProof silicone ring prevents damage caused by a shower falling
- GROHE Long-Life finish
- SpeedClean anti-limescale system
- Inner WaterGuide for a longer life
- TwistStop preventing the hose from twisting
- suitable for instantaneous heaters from 18 kW/h
- minimum flow rate 7 l/min.

Pure Freude
an Wasser

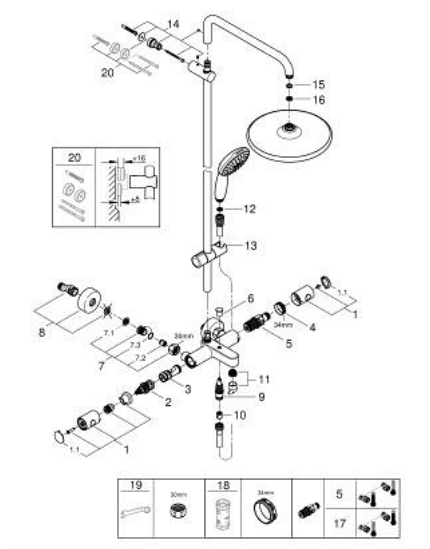


26 672 001 **TEMPESTA SYSTEM 250 SHOWER SYSTEM WITH BATH THERMOSTAT FOR WALL MOUNTING**

PRODUCT DESCRIPTION (2/2)

- professional edition

26 672 001 TEMPESTA SYSTEM 250 SHOWER SYSTEM WITH BATH THERMOSTAT FOR WALL MOUNTING



SPARE PARTS, November 2021 – now

- 1: Metal handle 1/2" (Order-nr. 47984000)
- 1.1: Cover Cap (Order-nr. 6458500M)
- 2: Aquadimmer (Order-nr. 47364000)
- 3: Water flow (Order-nr. 47887000)
- 4: retaining ring (Order-nr. 47743000)
- 5: Thermostatic compact cartridge 1/2" (Order-nr. 47439000)
- 6: Diverter knob (Order-nr. 65648000)
- 7: Non-return valve (Order-nr. 47189000)
- 7.1: Dirt strainer (Order-nr. 0726400M)
- 7.2: Non-return valve (Order-nr. 08565000)
- 7.3: O-Ring Ø17 x Ø2 (Order-nr. 0305500M)
- 8: S-union (Order-nr. 12662000)
- 9: Diverter (Order-nr. 65655000)
- 10: Non-return valve (Order-nr. 08565000)
- 11: Flow restrictor (Order-nr. 13926000)
- 12: Strainer (Order-nr. 0700200M)
- 13: Sliding piece (Order-nr. 48609000)
- 14: Outlet shower holder (Order-nr. 48423000)
- 15: Fibre seal dia. Ø 18,5 x Ø 12 x 2 (Order-nr. 0138900M)
- 16: Strainer (Order-nr. 48007000)
- 17: GROHE TurboStat cartridge 1/2" (Order-nr. 47175000)*
- 18: Socket spanner (Order-nr. 19332000)*
- 19: Special spanner (Order-nr. 19377000)*
- 20: Spacer (Order-nr. 26496000)*

*Special accessories