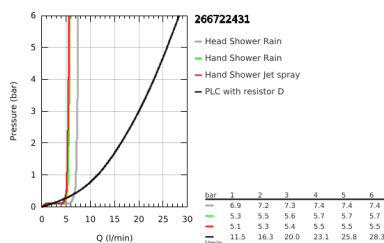
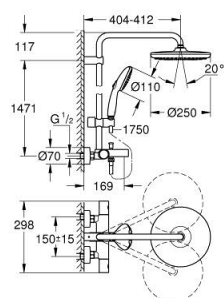
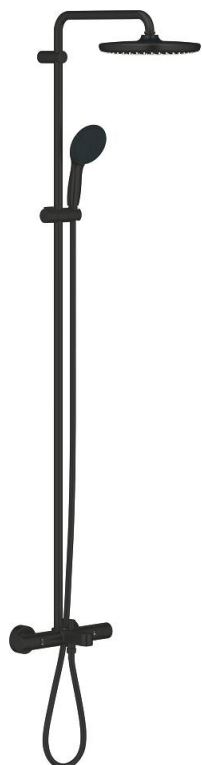


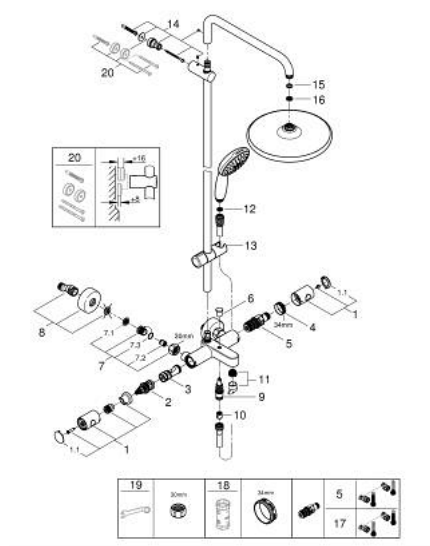
26 672 243 1 TEMPESTA SYSTEM 250 SHOWER SYSTEM WITH BATH THERMOSTAT FOR WALL MOUNTING



PRODUCT DESCRIPTION

- Colour: matte black
- consisting of:
 - horizontal swivable 390 mm projection shower arm
 - exposed thermostatic shower with Aquadimmer function
 - allows change between:
 - head shower Tempesta 250
 - spray pattern:
 - Rain
 - head shower with black rear cover
 - with ball joint
 - rotation angle $\pm 10^\circ$
 - bath inlet
 - separate diverter for hand shower
 - hand shower Tempesta 110
 - 2 spray patterns:
 - Rain, Jet
 - adjustable height via gliding element
 - shower hose 1750 mm 1/2" x 1/2" (28 388)
 - maximum flow rate (at 3 bar): 7.3 l/min
 - GROHE Water Saving - Less water, perfect flow
 - GROHE TurboStat compact cartridge with wax thermoelement
 - GROHE SafeStop safety button at 38°C (calibration required)
 - GROHE SafeStop Plus optional temperature limiter at 43°C included
 - GROHE SmartSwitch - easily rotate the dial to enjoy your preferred spray option
 - GROHE DreamSpray perfect spray pattern
 - ShockProof silicone ring prevents damage caused by a shower falling
 - SpeedClean anti-limescale system
 - Inner WaterGuide for a longer life
 - TwistStop preventing the hose from twisting
 - suitable for instantaneous heaters from 18 kW/h
 - minimum flow rate 7 l/min.
 - professional edition

26 672 243 1 TEMPESTA SYSTEM 250 SHOWER SYSTEM WITH BATH THERMOSTAT FOR WALL MOUNTING



SPARE PARTS, February 2023 – now

- 1: Metal handle 1/2" (Order-nr. 479842430)
- 1.1: Cover Cap (Order-nr. 64585243M)
- 2: Aquadimmer (Order-nr. 47364000)
- 3: Water flow (Order-nr. 47887000)
- 4: retaining ring (Order-nr. 47743000)
- 5: Thermostatic compact cartridge 1/2" (Order-nr. 47439000)
- 6: Diverter knob (Order-nr. 656482430)
- 7: Non-return valve (Order-nr. 471892430)
- 7.1: Dirt strainer (Order-nr. 0726400M)
- 7.2: Non-return valve (Order-nr. 08565000)
- 7.3: O-Ring Ø17 x Ø2 (Order-nr. 0305500M)
- 8: S-union (Order-nr. 126622430)
- 9: Diverter (Order-nr. 656552430)
- 10: Non-return valve (Order-nr. 08565000)
- 11: Flow restrictor (Order-nr. 13926000)
- 12: Strainer (Order-nr. 0700200M)
- 13: Sliding piece (Order-nr. 486092430)
- 14: Outlet shower holder (Order-nr. 48423000)
- 15: Fibre seal dia. Ø 18,5 x Ø 12 x 2 (Order-nr. 0138900M)
- 16: Strainer (Order-nr. 48007000)
- 17: GROHE TurboStat cartridge 1/2" (Order-nr. 47175000)*
- 18: Socket spanner (Order-nr. 19332000)*
- 19: Special spanner (Order-nr. 19377000)*
- 20: Spacer (Order-nr. 26496000)*

*Special accessories