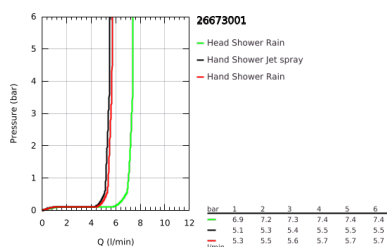
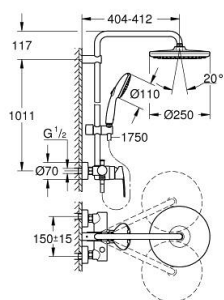


26 673 001 TEMPESTA SYSTEM 250 SHOWER SYSTEM WITH SINGLE LEVER FOR WALL MOUNTING



PRODUCT DESCRIPTION (1/2)

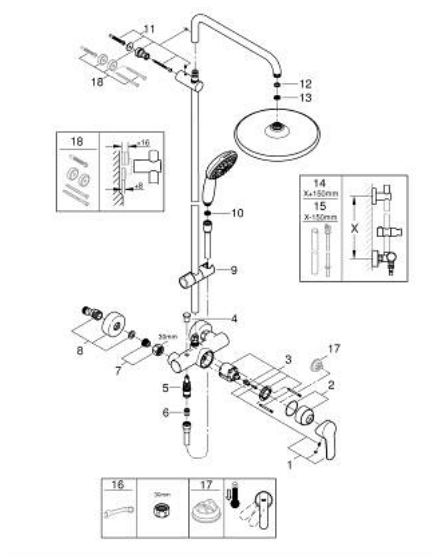
- Colour: chrome
- consisting of:
 - horizontal swivable 390 mm projection shower arm
 - exposed single-lever shower mixer with diverter
 - allows change between:
 - Rain
 - head shower with white rear cover
 - with ball joint
 - rotation angle $\pm 10^\circ$
 - hand shower Tempesta 110 (27 597)
- 2 spray patterns:
 - Rain, Jet
 - adjustable height via gliding element
- RotaflexTwistStop shower hose 1750 mm 1/2" x 1/2" (28 410)
- maximum flow rate (at 3 bar): 7.3 l/min
- GROHE Water Saving - Less water, perfect flow
- GROHE SilkMove 46 mm ceramic cartridge
- GROHE SmartSwitch - easily rotate the dial to enjoy your preferred spray option
- GROHE DreamSpray perfect spray pattern
- ShockProof silicone ring prevents damage caused by a shower falling
- GROHE Long-Life finish
- SpeedClean anti-limescale system
- Inner WaterGuide for a longer life
- TwistStop preventing the hose from twisting
- suitable for instantaneous heaters from 18 kW/h
- minimum flow rate 7 l/min.

26 673 001 **TEMPESTA SYSTEM 250 SHOWER SYSTEM WITH SINGLE LEVER FOR WALL MOUNTING**

PRODUCT DESCRIPTION (2/2)

- min. recommended pressure 1.0 bar
- professional edition

26 673 001 TEMPESTA SYSTEM 250 SHOWER SYSTEM WITH SINGLE LEVER FOR WALL MOUNTING



SPARE PARTS, November 2021 – now

- 1: Lever (Order-nr. 46726000)
- 2: Shield for cross handle (Order-nr. 46025000)
- 3: Cartridge (Order-nr. 46048000)
- 4: Diverter knob (Order-nr. 65648000)
- 5: Diverter (Order-nr. 65655000)
- 6: Non-return valve (Order-nr. 08565000)
- 7: Screw connection 1/2" (Order-nr. 45044000)
- 8: S-union (Order-nr. 12662000)
- 9: Sliding piece (Order-nr. 48609000)
- 10: Strainer (Order-nr. 0700200M)
- 11: Outlet shower holder (Order-nr. 48423000)
- 12: Fibre seal dia. Ø 18,5 x Ø 12 x 2 (Order-nr. 0138900M)
- 13: Strainer (Order-nr. 48007000)
- 14: Shower system pipe for retrofitting (Order-nr. 48514000)*
- 15: Shower system pipe for retrofitting (Order-nr. 48515000)*
- 16: Special spanner (Order-nr. 19377000)*
- 17: Temperature limiter (Order-nr. 46375000)*
- 18: Spacer (Order-nr. 26496000)*

*Special accessories