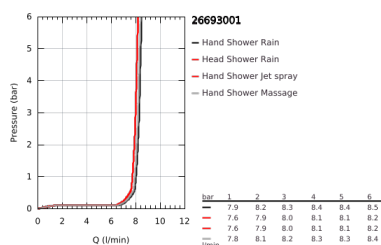
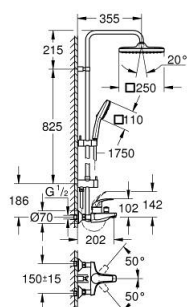


26 693 001 TEMPESTA SYSTEM 250 CUBE SHOWER SYSTEM WITH SINGLE LEVER BATH MIXER FOR WALL MOUNTING



PRODUCT DESCRIPTION (1/2)

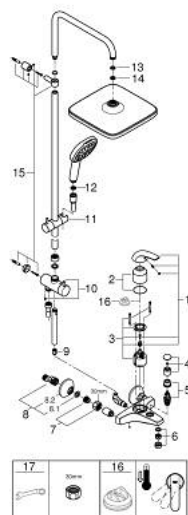
- Colour: chrome
- with short shower rail for installation in showers
- consisting of:
 - horizontal 355 mm shower arm
 - exposed single-lever bath mixer with diverter handle
 - allows change between:
 - head shower Tempesta 250 Cube (26 685)
 - spray pattern:
 - Rain
 - head shower with white rear cover
 - with ball joint
 - rotation angle $\pm 10^\circ$
 - bath inlet
 - separate diverter for hand shower
 - hand shower Tempesta Cube 110 (27 574)
 - 3 spray patterns:
 - Rain, Jet, Massage
 - adjustable height via gliding element
 - RotaflexTwistStop shower hose 1750 mm 1/2" x 1/2" (28 410)
 - maximum flow rate (at 3 bar): 8.3 l/min
 - GROHE Water Saving - Less water, perfect flow
 - GROHE SilkMove 46 mm ceramic cartridge
 - GROHE SmartSwitch - easily rotate the dial to enjoy your preferred spray option
 - GROHE DreamSpray perfect spray pattern
 - ShockProof silicone ring prevents damage caused by a shower falling
 - GROHE Long-Life finish
 - SpeedClean anti-limescale system
 - Inner WaterGuide for a longer life
 - TwistStop preventing the hose from twisting
 - suitable for instantaneous heaters from 18 kW/h
 - minimum flow rate 7 l/min.

26 693 001 **TEMPESTA SYSTEM 250 CUBE SHOWER SYSTEM WITH SINGLE LEVER BATH MIXER FOR WALL MOUNTING**

PRODUCT DESCRIPTION (2/2)

- min. recommended pressure 1.0 bar
- professional edition

26 693 001 TEMPESTA SYSTEM 250 CUBE SHOWER SYSTEM WITH SINGLE LEVER BATH MIXER FOR WALL MOUNTING



SPARE PARTS, November 2021 – now

- 1: Lever (Order-nr. 46700000)
- 2: Shield for cross handle (Order-nr. 46578000)
- 3: Cartridge (Order-nr. 46048000)
- 4: Diverter knob (Order-nr. 46571000)
- 5: Diverter (Order-nr. 08915000)
- 6: Flow restrictor (Order-nr. 13952000)
- 7: Screw connection 1/2" (Order-nr. 45044000)
- 8: S-union (Order-nr. 12075000)
- 8.1: Sealing washer (Order-nr. 0138600M)
- 8.2: Escutcheon (Order-nr. 0221000M)
- 9: Non-return valve (Order-nr. 08565000)
- 10: Diverter (Order-nr. 46877000)
- 11: Sliding piece (Order-nr. 46876000)
- 12: Strainer (Order-nr. 0700200M)
- 13: Fibre seal dia. Ø 18,5 x Ø 12 x 2 (Order-nr. 0138900M)
- 14: Strainer (Order-nr. 48007000)
- 15: Mounting set (Order-nr. 46878000)
- 16: Temperature limiter (Order-nr. 46375000)*
- 17: Special spanner (Order-nr. 19377000)*

*Special accessories