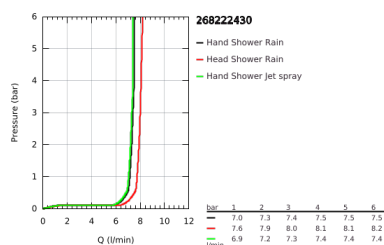
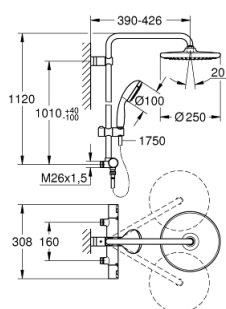


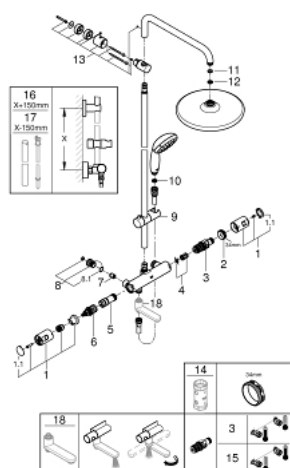
26 822 243 0 VITALIO START SYSTEM 250 FLEX SHOWER SYSTEM WITH DIVERTER FOR WALL MOUNTING



PRODUCT DESCRIPTION

- Colour: matte black
- consisting of:
 - horizontal swivable 390 mm projection shower arm
 - exposed thermostatic shower with Aquadimmer function
 - centre distance 160 mm
 - allows change between:
 - head shower Vitalio Start 250
 - Rain spray pattern
 - head shower with white rear cover
 - with ball joint
 - rotation angle $\pm 10^\circ$
 - hand shower Vitalio Start 100 (27 946)
- 2 spray patterns:
 - Rain, Jet
- maximum flow rate (at 3 bar): 7.4 l/min
- adjustable height via gliding element
- shower hose 1750 mm 1/2" x 1/2" (28 742)
- GROHE Water Saving - Less water, perfect flow
- GROHE TurboStat compact cartridge with wax thermoelement
- GROHE SafeStop safety button at 38°C (calibration required)
- GROHE SafeStop Plus optional temperature limiter at 43°C included
- GROHE DreamSpray perfect spray pattern
- GROHE FastFixation upper bracket, +40 / -100 mm height adjustable and up to 36 mm depth adjustable
- SpeedClean anti-limescale system
- Inner WaterGuide for a longer life
- ShockProof silicone ring prevents damage caused by a shower falling
- TwistStop preventing the hose from twisting
- suitable for instantaneous heaters from 18 kW/h
- minimum flow rate 5 l/min.
- Consumer edition

26 822 243 0 VITALIO START SYSTEM 250 FLEX SHOWER SYSTEM WITH DIVERTER FOR WALL MOUNTING



SPARE PARTS, March 2022 – now

- 1: Handle (Order-nr. 477282430)
- 1.1: Cover Cap (Order-nr. 64585243M)
- 2: retaining ring (Order-nr. 47743000)
- 3: Thermostatic compact cartridge 1/2" (Order-nr. 47439000)
- 4: Sound absorber (Order-nr. 47398000)
- 5: Water flow (Order-nr. 47751000)
- 6: Aquadimmer (Order-nr. 12433000)
- 7: Non-return valve (Order-nr. 08565000)
- 8: union connection (Order-nr. 48599000)
- 8.1: O-Ring Ø17 x Ø2 (Order-nr. 0305500M)
- 9: Sliding piece (Order-nr. 121402430)
- 10: Strainer (Order-nr. 0700200M)
- 11: Fibre seal dia. Ø 18,5 x Ø 12 x 2 (Order-nr. 0138900M)
- 12: Strainer (Order-nr. 48007000)
- 13: Outlet shower holder (Order-nr. 486192430)
- 14: Socket spanner (Order-nr. 19332000)*
- 15: GROHE TurboStat cartridge 1/2" (Order-nr. 47175000)*
- 18: Swivel spout with built-in diverter (Order-nr. 134502430)*

*Special accessories