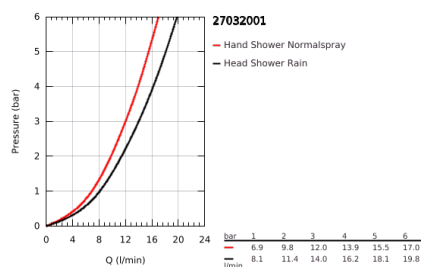
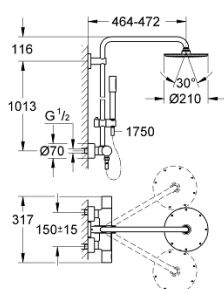


## 27 032 001 RAINSHOWER SYSTEM 210 SHOWER SYSTEM WITH THERMOSTAT FOR WALL MOUNTING



### PRODUCT DESCRIPTION

- Colour: chrome
- consisting of:
  - horizontal swivable 450 mm projection shower arm
  - exposed thermostatic showerwith Aquadimmer function
  - allows change between:
    - Rainshower Cosmopolitan 210 metal head shower
    - with ball joint
    - rotation angle  $\pm 15^\circ$
  - metal stick hand shower
  - adjustable height via gliding element
  - metal shower hose 1750 mm
- GROHE TurboStat compact cartridge with wax thermoelement
- GROHE SafeStop safety button at  $38^\circ\text{C}$  ( calibration required )
- GROHE SafeStop Plus optional temperature limiter at  $43^\circ\text{C}$  included
- GROHE CoolTouch prevents scalding on hot surfaces
- GROHE DreamSpray perfect spray pattern
- GROHE Long-Life finish
- SpeedClean anti-limescale system
- Inner WaterGuide for a longer life
- suitable for instantaneous heaters from 18 kW/h
- minimum flow rate 7 l/min.

## 27 032 001 RAINSHOWER SYSTEM 210 SHOWER SYSTEM WITH THERMOSTAT FOR WALL MOUNTING



### SPARE PARTS, May 2016 – now

- 1: Aquadimmer handle (Order-nr. 47804000)
  - 2: Temperature limiter (Order-nr. 47723000)
  - 3: Aquadimmer (Order-nr. 47364000)
  - 4: Water flow (Order-nr. 47887000)
  - 5: Temperature scale handle (Order-nr. 47811000)
  - 6: retaining ring (Order-nr. 47743000)
  - 7: Thermostatic compact cartridge 1/2" (Order-nr. 47439000)
  - 8: Non-return valve (Order-nr. 47189000)
  - 8.1: Dirt strainer (Order-nr. 0726400M)
  - 8.2: Non-return valve (Order-nr. 08565000)
  - 8.3: O-Ring Ø17 x Ø2 (Order-nr. 0305500M)
  - 9: S-union (Order-nr. 12693000)
  - 10: Non-return valve (Order-nr. 08565000)
  - 11: Sliding piece (Order-nr. 12140000)
  - 12: Strainer (Order-nr. 0700200M)
  - 13: Inlet valve assembly (Order-nr. 45933000)
  - 14: Outlet shower holder (Order-nr. 48279000)
  - 15: Spacer (Order-nr. 27180000)\*
  - 16: Socket spanner (Order-nr. 19332000)\*
  - 17: GROHE TurboStat cartridge 1/2" (Order-nr. 47175000)\*
  - 18: Special spanner (Order-nr. 19377000)\*
  - 19: Shower system pipe for retrofitting (Order-nr. 48053000)\*
  - 20: Shower system pipe for retrofitting (Order-nr. 48054000)\*
  - 21: Shower arm for shower systems (Order-nr. 14047000)\*
- \*Special accessories