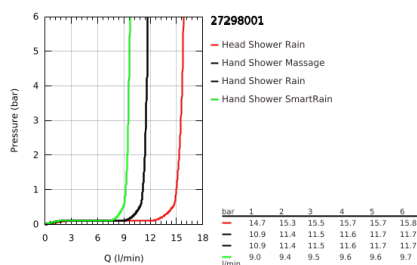
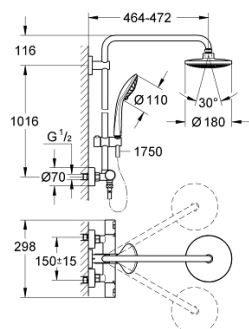


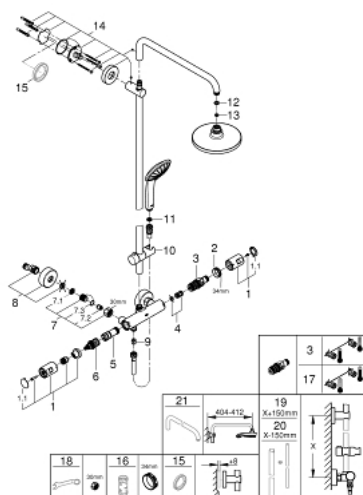
## 27 298 001 VITALIO JOY SYSTEM 180 SHOWER SYSTEM WITH THERMOSTAT FOR WALL MOUNTING



### PRODUCT DESCRIPTION

- Colour: chrome
- consisting of:
  - horizontal swivable 450 mm projection shower arm
  - exposed thermostat Precision Joy with Aquadimmer function
  - allows change between:
    - head shower Vitalio Joy 180, chrome plated spray face, 9.5 l/min
    - Rain spray pattern
  - maximum flow rate (at 3 bar): 15.5 l/min
  - with ball joint
  - rotation angle  $\pm 15^\circ$
- hand shower Vitalio Joy 110 Massage (27 319)
  - 3 spray patterns:
    - Rain, SmartRain, Massage
  - maximum flow rate (at 3 bar): 11.5 l/min
- GROHE SprayDimmer (Stepless flow rate reduction)
  - adjustable height via gliding element
- shower hose VitalioFlex Silver 1750 mm, 1/2" x 1/2" (27 506)
  - minimum flow rate 7 l/min.
- GROHE Water Saving - Less water, perfect flow
- GROHE DreamSpray perfect spray pattern
- GROHE Long-Life finish
- GROHE TurboStat compact cartridge with wax thermoelement
- GROHE SafeStop safety button at 38°C ( calibration required )
- GROHE SafeStop Plus optional temperature limiter at 43°C included
- SpeedClean anti-limescale system
- Inner WaterGuide for a longer life
- TwistStop preventing the hose from twisting
- suitable for instantaneous heaters from 18 kW/h
- QuickSpanner included

## 27 298 001 VITALIO JOY SYSTEM 180 SHOWER SYSTEM WITH THERMOSTAT FOR WALL MOUNTING



### SPARE PARTS, May 2016 – now

- 1: Handle (Order-nr. 47728000)
- 1.1: Cover Cap (Order-nr. 6458500M)
- 2: retaining ring (Order-nr. 47743000)
- 3: Thermostatic compact cartridge 1/2" (Order-nr. 47439000)
- 4: Sound absorber (Order-nr. 47398000)
- 5: Water flow (Order-nr. 47751000)
- 6: Aquadimmer (Order-nr. 12433000)
- 7: Non-return valve (Order-nr. 47189000)
- 7.1: Dirt strainer (Order-nr. 0726400M)
- 7.2: Non-return valve (Order-nr. 08565000)
- 7.3: O-Ring Ø17 x Ø2 (Order-nr. 0305500M)
- 8: S-union (Order-nr. 12662000)
- 9: Non-return valve (Order-nr. 08565000)
- 10: Sliding piece (Order-nr. 12140000)
- 11: Strainer (Order-nr. 0700200M)
- 12: Fibre seal dia. Ø 18,5 x Ø 12 x 2 (Order-nr. 0138900M)
- 13: Strainer (Order-nr. 48007000)
- 14: Outlet shower holder (Order-nr. 48279000)
- 15: Spacer (Order-nr. 27180000)\*
- 16: Socket spanner (Order-nr. 19332000)\*
- 17: GROHE TurboStat cartridge 1/2" (Order-nr. 47175000)\*
- 18: Special spanner (Order-nr. 19377000)\*
- 19: Shower system pipe for retrofitting (Order-nr. 48053000)\*
- 20: Shower system pipe for retrofitting (Order-nr. 48054000)\*
- 21: Shower arm for shower systems (Order-nr. 14047000)\*

\*Special accessories