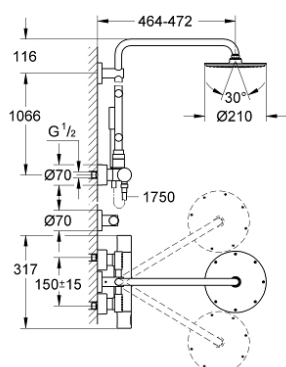


## 27 374 000 RAINSHOWER SYSTEM 210 SHOWER SYSTEM WITH THERMOSTAT AND SIDE SHOWERS

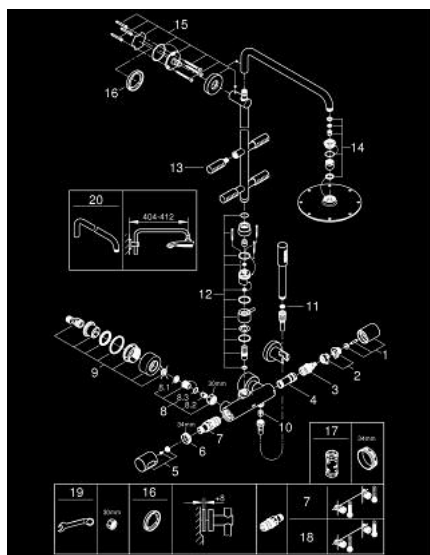


### PRODUCT DESCRIPTION

- Colour: chrome
- consisting of:
  - horizontal swivable 450 mm projection shower arm
  - exposed thermostatic shower with Aquadimmer function
  - allows change between:
    - metal head shower Rainshower Cosmopolitan 210 (28 368 000)
    - with ball joint
    - rotation angle  $\pm 15^\circ$
  - hand shower Sena Stick (28 034 000)
  - 4 adjustable side showers
  - metal shower hose 1750 mm (28 025)
- GROHE TurboStat compact cartridge with wax thermoelement
- GROHE SafeStop safety button at  $38^\circ\text{C}$  ( calibration required )
- GROHE SafeStop Plus optional temperature limiter at  $43^\circ\text{C}$  included
- GROHE CoolTouch
- GROHE DreamSpray perfect spray pattern
- GROHE Long-Life finish
- SpeedClean anti-limescale system
- Inner WaterGuide for a longer life
- suitable for instantaneous heaters from 18 kW/h
- minimum flow rate 10 l/min (at separate use of head, hand or side showers)
- min. recommended pressure 1.0 bar



## 27 374 000 RAINSHOWER SYSTEM 210 SHOWER SYSTEM WITH THERMOSTAT AND SIDE SHOWERS



### SPARE PARTS, April 2016 – now

- 1: Aquadimmer handle (Order-nr. 47804000)
- 2: Temperature limiter (Order-nr. 47723000)
- 3: Aquadimmer (Order-nr. 47364000)
- 4: Water flow (Order-nr. 47887000)
- 5: Temperature scale handle (Order-nr. 47811000)
- 6: retaining ring (Order-nr. 47743000)
- 7: Thermostatic compact cartridge 1/2" (Order-nr. 47439000)
- 8: Non-return valve (Order-nr. 47189000)
- 8.1: Dirt strainer (Order-nr. 0726400M)
- 8.2: Non-return valve (Order-nr. 08565000)
- 8.3: O-Ring Ø17 x Ø2 (Order-nr. 0305500M)
- 9: S-union (Order-nr. 12693000)
- 10: Non-return valve (Order-nr. 08565000)
- 11: Strainer (Order-nr. 0700200M)
- 12: Repl.kit f.rotary valve (Order-nr. 48031000)
- 13: Spare side shower (Order-nr. 48032000)
- 14: Inlet valve assembly (Order-nr. 45933000)
- 15: Outlet shower holder (Order-nr. 48279000)
- 16: Spacer (Order-nr. 27180000)\*
- 17: Socket spanner (Order-nr. 19332000)\*
- 18: GROHE TurboStat cartridge 1/2" (Order-nr. 47175000)\*
- 19: Special spanner (Order-nr. 19377000)\*
- 20: Shower arm for shower systems (Order-nr. 14047000)\*

\*Special accessories