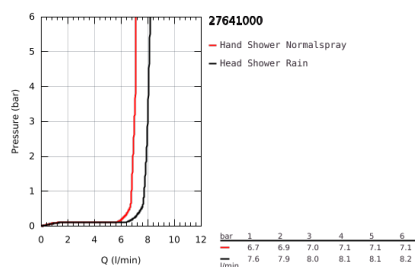


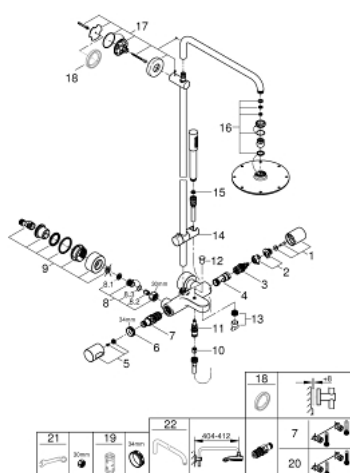
## 27 641 000 RAINSHOWER SYSTEM 210 SHOWER SYSTEM WITH BATH THERMOSTAT FOR WALL MOUNTING



### PRODUCT DESCRIPTION

- Colour: chrome
- consisting of:
  - horizontal swivable 450 mm projection shower arm
  - exposed thermostatic shower with Aquadimmer function
  - allows change between:
    - head shower Rainshower Cosmopolitan 210 (28 373)
  - material: metal
  - with ball joint
  - rotation angle  $\pm 15^\circ$
- bath inlet
- separate diverter for hand shower Sena (28 341 000)
- adjustable height via gliding element (12 140 000)
- metal shower hose 1750 mm (27 178)
- GROHE Water Saving 9.5 l/min flow limiter
- GROHE TurboStat compact cartridge with wax thermoelement
- GROHE SafeStop safety button at  $38^\circ\text{C}$  ( calibration required )
- GROHE SafeStop Plus optional temperature limiter at  $43^\circ\text{C}$  included
- GROHE CoolTouch
- GROHE DreamSpray perfect spray pattern
- GROHE Long-Life finish
- SpeedClean anti-limescale system
- Inner WaterGuide for a longer life
- suitable for instantaneous heaters from 18 kW/h
- minimum flow rate 7 l/min.

## 27 641 000 RAINSHOWER SYSTEM 210 SHOWER SYSTEM WITH BATH THERMOSTAT FOR WALL MOUNTING



### SPARE PARTS, November 2017 – March 2021

- 1: Aquadimmer handle (Order-nr. 47804000)
- 2: Temperature limiter (Order-nr. 47723000)
- 3: Aquadimmer (Order-nr. 12433000)
- 4: Water flow (Order-nr. 47751000)
- 5: Temperature scale handle (Order-nr. 47811000)
- 6: retaining ring (Order-nr. 47743000)
- 7: Thermostatic compact cartridge 1/2" (Order-nr. 47439000)
- 8: Non-return valve (Order-nr. 47189000)
- 8.1: Dirt strainer (Order-nr. 0726400M)
- 8.2: Non-return valve (Order-nr. 08565000)
- 8.3: O-Ring Ø17 x Ø2 (Order-nr. 0305500M)
- 9: S-union (Order-nr. 12693000)
- 10: Non-return valve (Order-nr. 08565000)
- 11: Diverter (Order-nr. 65655000)
- 12: Diverter knob (Order-nr. 65648000)
- 13: Flow restrictor (Order-nr. 13926000)
- 14: Sliding piece (Order-nr. 12140000)
- 15: Strainer (Order-nr. 0700200M)
- 16: Inlet valve assembly (Order-nr. 45933000)
- 17: Outlet shower holder (Order-nr. 48279000)
- 18: Spacer (Order-nr. 27180000)\*
- 19: Socket spanner (Order-nr. 19332000)\*
- 20: GROHE TurboStat cartridge 1/2" (Order-nr. 47175000)\*
- 21: Special spanner (Order-nr. 19377000)\*
- 22: Shower arm for shower systems (Order-nr. 14047000)\*

\*Special accessories