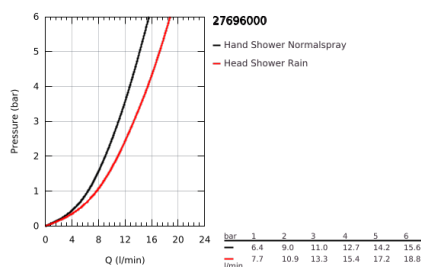
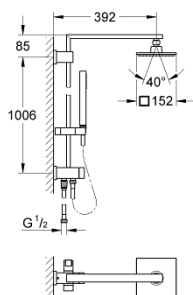


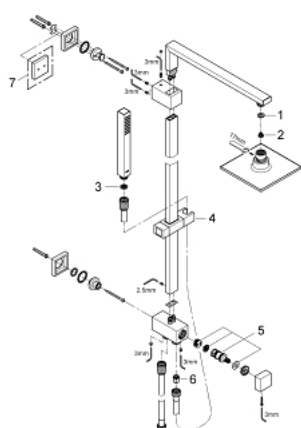
27 696 000 EUPHORIA CUBE SYSTEM 150 SHOWER SYSTEM WITH DIVERTER FOR WALL MOUNTING



PRODUCT DESCRIPTION

- Colour: chrome
- consisting of:
 - shower arm
 - projection 400 mm
 - change between hand and head shower by using the diverter
 - head shower Euphoria Cube 152 mm x 152 mm
 - Rain spray pattern
 - maximum flow rate (at 3 bar): 13.5 l/min
 - with ball joint
 - rotation angle $\pm 20^\circ$
 - hand shower Euphoria Cube Stick (27 698)
 - maximum flow rate (at 3 bar): 11 l/min
 - adjustable height via gliding element
 - Silverflex shower hose 1750 mm 1/2" x 1/2" (28 388 000)
 - Silverflex shower hose 800 mm
 - connection to water supply with 1/2"-thread of the 800 mm shower hose to faucet / wall union
 - GROHE DreamSpray perfect spray pattern
 - GROHE Long-Life finish
 - SpeedClean anti-limescale system
 - TwistStop preventing the hose from twisting
 - suitable for instantaneous heaters from 18 kW/h
 - minimum flow rate 7 l/min.

27 696 000 EUPHORIA CUBE SYSTEM 150 SHOWER SYSTEM WITH DIVERTER FOR WALL MOUNTING



SPARE PARTS, October 2010 – now

- 1: Fibre seal dia. Ø 18,5 x Ø 12 x 2 (Order-nr. 0138900M)
- 2: Strainer (Order-nr. 0676800M)
- 3: Strainer (Order-nr. 0700200M)
- 4: Sliding piece (Order-nr. 48180000)
- 5: Repl.kit f.rotary valve (Order-nr. 45915000)
- 6: Non-return valve (Order-nr. 08565000)
- 7: Spacer (Order-nr. 27933000)*

*Special accessories