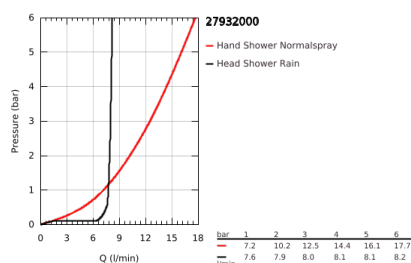
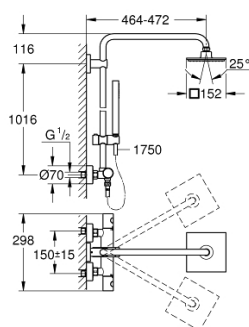


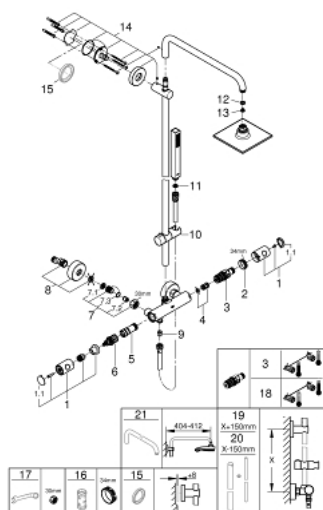
## 27 932 000 EUPHORIA SYSTEM 150 SHOWER SYSTEM WITH THERMOSTATIC MIXER FOR WALL MOUNTING



### PRODUCT DESCRIPTION

- Colour: chrome
- consisting of:
  - horizontal swivable 450 mm projection shower arm
  - exposed thermostatic shower with Aquadimmer function
  - allows change between:
    - head shower Euphoria Cube 150 (27 705 000)
    - Rain spray pattern
  - maximum flow rate (at 3 bar): 8 l/min
  - with ball joint
  - rotation angle  $\pm 12^\circ$
  - hand shower Euphoria Cube Stick (27 698)
  - maximum flow rate (at 3 bar): 12.5 l/min
  - adjustable height via gliding element
  - Silverflex shower hose 1750 mm 1/2" x 1/2" (28 388 000)
  - GROHE TurboStat compact cartridge with wax thermoelement
  - GROHE Water Saving - Less water, perfect flow
  - GROHE SafeStop safety button at 38°C ( calibration required )
  - GROHE SafeStop Plus optional temperature limiter at 43°C included
  - GROHE DreamSpray perfect spray pattern
  - GROHE Long-Life finish
  - SpeedClean anti-limescale system
  - Inner WaterGuide for a longer life
  - TwistStop preventing the hose from twisting
  - suitable for instantaneous heaters from 18 kW/h
  - minimum flow rate 7 l/min.
  - optional upgrade: GROHE EasyReach tray (26 362), sold separately

## 27 932 000 EUPHORIA SYSTEM 150 SHOWER SYSTEM WITH THERMOSTATIC MIXER FOR WALL MOUNTING



### SPARE PARTS, July 2017 – now

- 1: Metal handle 1/2" (Order-nr. 47984000)
- 1.1: Cover Cap (Order-nr. 6458500M)
- 2: retaining ring (Order-nr. 47743000)
- 3: Thermostatic compact cartridge 1/2" (Order-nr. 47439000)
- 4: Sound absorber (Order-nr. 47398000)
- 5: Water flow (Order-nr. 47751000)
- 6: Aquadimmer (Order-nr. 12433000)
- 7: Non-return valve (Order-nr. 47189000)
- 7.1: Dirt strainer (Order-nr. 0726400M)
- 7.2: Non-return valve (Order-nr. 08565000)
- 7.3: O-Ring Ø17 x Ø2 (Order-nr. 0305500M)
- 8: S-union (Order-nr. 12662000)
- 9: Non-return valve (Order-nr. 08565000)
- 10: Sliding piece (Order-nr. 12140000)
- 11: Strainer (Order-nr. 0700200M)
- 12: Fibre seal dia. Ø 18,5 x Ø 12 x 2 (Order-nr. 0138900M)
- 13: Strainer (Order-nr. 0676800M)
- 14: Outlet shower holder (Order-nr. 48279000)
- 15: Spacer (Order-nr. 27180000)\*
- 16: Socket spanner (Order-nr. 19332000)\*
- 17: Special spanner (Order-nr. 19377000)\*
- 18: GROHE TurboStat cartridge 1/2" (Order-nr. 47175000)\*
- 19: Shower system pipe for retrofitting (Order-nr. 48053000)\*
- 20: Shower system pipe for retrofitting (Order-nr. 48054000)\*
- 21: Shower arm for shower systems (Order-nr. 14047000)\*

\*Special accessories