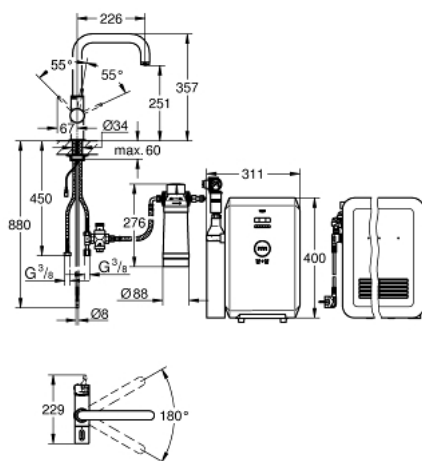


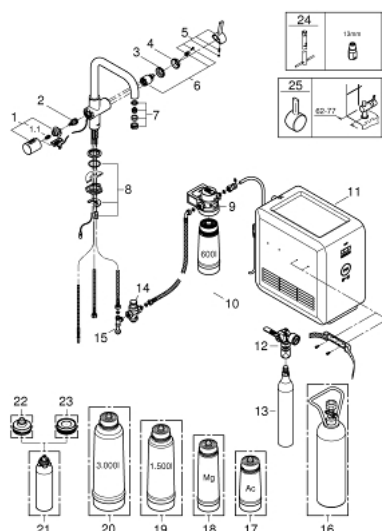
## 31 324 DC1 GROHE BLUE PROFESSIONAL STARTER KIT



### PRODUCT DESCRIPTION

- Colour: supersteel
- consisting of:
  - GROHE Blue single-lever sink mixer with filter function
  - monobloc installation
  - U spout
  - separate handle for 3 types of filtered and chilled table water
  - still, medium, sparkling
  - headpart 1/2"
  - GROHE Long-Life finish
  - GROHE SilkMove 35 mm ceramic cartridge
  - adjustable flow rate limiter
  - swivel tubular spout
  - swivel area 180°
  - separate inner water ways for filtered and non-filtered water
- flexible connection hoses
- GROHE Blue Cube
- 270 Watt cooling unit, 230 V, 50 Hz
- type of protection IP 21
- CE approved
- requires ventilation holes in the bottom of the kitchen cabinet
- GROHE Blue size S filter, filter head with flexible adjustment for regions with water hardness of more than 9° dKH
- for regions with water hardness below 9° dKH please order activated carbon filter 40 547 001
- GROHE Blue 425 g CO<sub>2</sub>-carbonization bottle
- Min. recommended pressure 2.0 bar
- This product includes an article which is declared as a hazardous substance. Find more information in the safety data sheet. You can download the safety data at: [www.grohe.com/safety-data-sheets/](http://www.grohe.com/safety-data-sheets/)

## 31 324 DC1 GROHE BLUE PROFESSIONAL STARTER KIT



### SPARE PARTS, November 2017 – now

- 1: Handle (Order-nr. 46652DC0)
- 1.1: Snap insert (Order-nr. 0538600M)
- 2: Headpart (Order-nr. 46713000)
- 3: Screw coupling (Order-nr. 46460000)
- 4: Shield for cross handle (Order-nr. 46116DC0)
- 5: Lever (Order-nr. 46653DC0)
- 6: Cartridge (Order-nr. 46374000)
- 7: Flow restrictor (Order-nr. 64374DC0)
- 8: Shank fastening assembly (Order-nr. 46249000)
- 9: Filter Head (Order-nr. 64508001)
- 10: Filter S-Size (Order-nr. 40404001)
- 11: Cooler and carbonizer (Order-nr. 40554001)
- 12: Pressure indicator (Order-nr. 46717000)
- 12.1: CO<sub>2</sub> adapter (Order-nr. 40962000)
- 13: Starter kit 425 g CO<sub>2</sub> bottles (4 pieces) (Order-nr. 40422000)
- 14: Pressure reducing valve (Order-nr. 40452000)
- 15: Original WAS® T-piece 3/8" (Order-nr. 41007000)
- 16: Starter kit 2 kg CO<sub>2</sub> bottle (Order-nr. 40423000)\*
- 17: Activated carbon filter (Order-nr. 40547001)\*
- 18: Magnesium+ Filter (Order-nr. 40691001)\*
- 19: Filter M-Size (Order-nr. 40430001)\*
- 20: Filter L-Size (Order-nr. 40412001)\*
- 21: Cleaning cartridge (Order-nr. 40434001)\*
- 22: Cleaning cartridge adapter (Order-nr. 40694000)\*
- 23: Cleaning cartridge for adapter set (Order-nr. 40699000)\*
- 24: Mounting wrench (Order-nr. 19017000)\*
- 25: Shorter mixed water lever (Order-nr. 40621DC0)\*

\*Special accessories