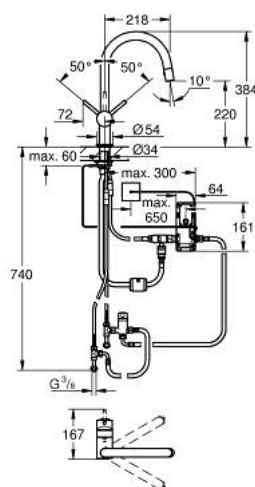


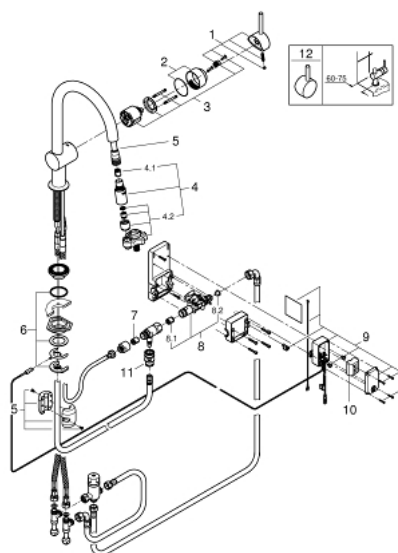
31 358 001 MINTA TOUCH ELECTRONIC SINGLE-LEVER SINK MIXER 1/2"



PRODUCT DESCRIPTION

- Colour: chrome
- C-spout
- Touch: activation of water via skin contact
- battery supply 6 V lithium-battery, type CR-P2
- CE approved
- solenoid valve
- fixed value mixing valve
- automatically stops after 60 sec. (factory set)
- type of protection IP 44
- GROHE SilkMove 46 mm ceramic cartridge
- flow strainer
- pull-out mousseur spray
- diverter: laminar spray/SpeedClean shower jet
- automatic return to laminar spray
- swivel tubular spout
- swivel area 360°
- protected against backflow
- flexible connection hoses
- rapid installation system

31 358 001 MINTA TOUCH ELECTRONIC SINGLE-LEVER SINK MIXER 1/2"



SPARE PARTS, May 2015 – now

- 1: Lever (Order-nr. 46015000)
 - 2: Shield for cross handle (Order-nr. 46025000)
 - 3: Cartridge (Order-nr. 46048000)
 - 4: Hand shower (Order-nr. 46857000)
 - 4.1: Non-return valve (Order-nr. 08565000)
 - 4.2: Flow straightener (Order-nr. 13997000)
 - 5: Hose for sink mixer with pull-out dual spray or mousseur (Order-nr. 48293000)
 - 6: Shank fastening assembly (Order-nr. 46345000)
 - 7: Non-return valve (Order-nr. 08565000)
 - 8: Solenoid valve (Order-nr. 48213000)
 - 8.1: Non-return valve (Order-nr. 08565000)
 - 8.2: Strainer (Order-nr. 42395000)
 - 9: Control unit (Order-nr. 48214000)
 - 10: Battery (Order-nr. 42886000)
 - 11: Quick coupling (Order-nr. 46338000)
 - 12: Lever (Order-nr. 40684000)*
- *Special accessories