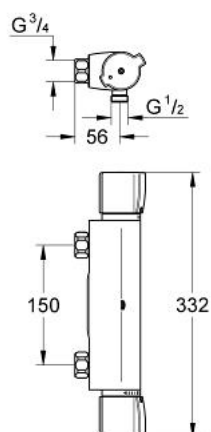


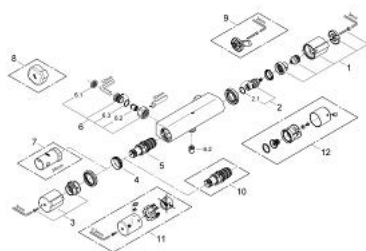
34 255 000 GROHTHERM 2000 SPECIAL THERMOSTATIC SHOWER MIXER 1/2"



PRODUCT DESCRIPTION

- Colour: chrome
- wall mounted
- GROHE CoolTouch safety housing
- metal wing handles
- GROHE TurboStat compact cartridge with wax thermoelement
- integrated mixed water shut off
- ceramic headpart 1/2", 180°
- volume handle with individually adjustable economy stop
- temperature scale handle with pre-adjustable metal safety stop between 35°C and 43°C (calibration required)
- easy thermal disinfection with accessory handle 47 764 000
- shower bottom outlet 1/2"
- built-in non return valves
- without connection unions
- without escutcheons
- dirt strainers
- protected against backflow
- GROHE Long-Life finish
- GROHE ErgoPlus
- GROHE SafetyPlus fixed temperature stop

34 255 000 GROHTHERM 2000 SPECIAL THERMOSTATIC SHOWER MIXER 1/2"



SPARE PARTS, March 2007 – now

- 1: Handle for shut-off valve (Order-nr. 47732000)
- 2: Ceramic headpart, 1/2" (Order-nr. 45346000)
- 2.1: O-Ring Ø18,2 x Ø1,7 (Order-nr. 0392400M)
- 3: Temperature knob with metal end stop (Order-nr. 47733000)
- 4: retaining ring (Order-nr. 47743000)
- 5: Thermostatic compact cartridge 1/2" (Order-nr. 47439000)
- 6: Non-return valve (Order-nr. 47189000)
- 6.1: Dirt strainer (Order-nr. 0726400M)
- 6.2: Non-return valve (Order-nr. 08565000)
- 6.3: O-Ring Ø17 x Ø2 (Order-nr. 0305500M)
- 7: Socket spanner (Order-nr. 19332000)*
- 8: Unlocking handle (Order-nr. 47764000)*
- 9: Handle for disabled use (Order-nr. 47735000)*
- 10: GROHE TurboStat cartridge 1/2" (Order-nr. 47175000)*
- 11: Metal handle temperature control (Order-nr. 47763000)*
- 12: Handle for shut-off valve, metallic (Order-nr. 07749000)*

*Special accessories