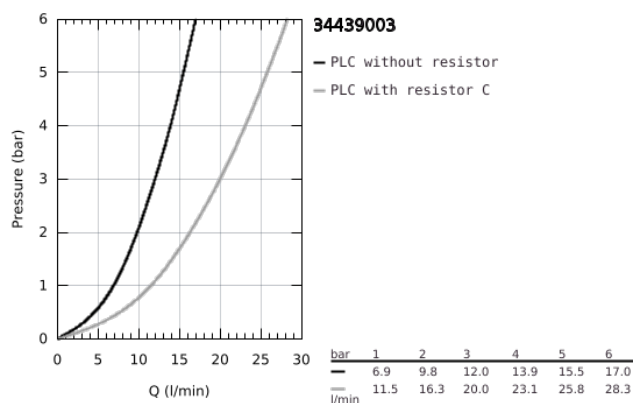
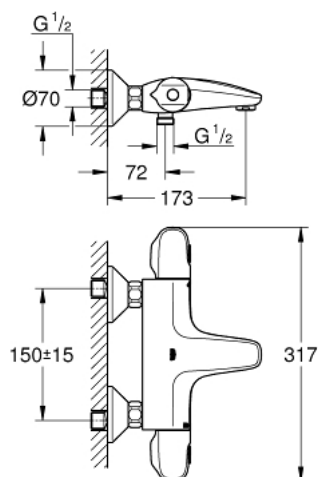


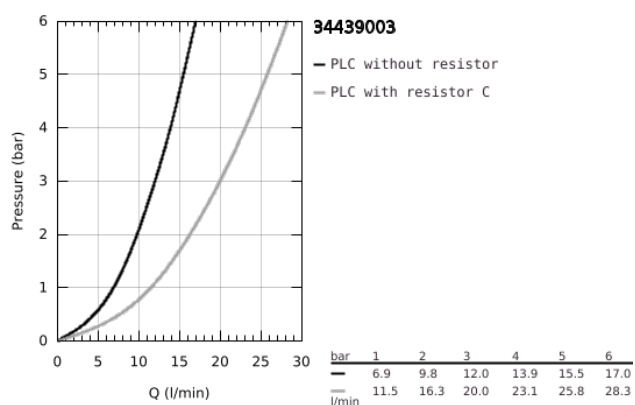
## 34 439 003 GROHTHERM 1000 THERMOSTATIC BATH/SHOWER MIXER 1/2"



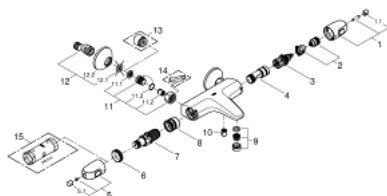
### PRODUCT DESCRIPTION

- Colour: chrome
- wall mounted
- GROHE CoolTouch safety housing
- GROHE Long-Life finish
- GROHE MetalGrip ergonomically shaped metal handles
- GROHE SafeStop safety button at 38°C ( calibration required )
- GROHE SafeStop Plus integrated temperature limiter at max 50°C
- GROHE Turbostat C3 compact cartridge with wax thermoelement
- integrated mixed water shut off
- GROHE AquaDimmer Eco with multiple function:
  - integrated GROHE EcoButton(economy button with economy stop for shower)
  - flow control
  - diverter: bath/shower
- shower bottom outlet 1/2"
- mousseur
- built-in non return valves
- dirt strainers
- protected against backflow
- S-unions
- metal escutcheon
- GROHE Water Saving - Less water, perfect flow

34 439 003 **GROHTHERM 1000 THERMOSTATIC BATH/SHOWER MIXER 1/2"**



## 34 439 003 GROHTHERM 1000 THERMOSTATIC BATH/SHOWER MIXER 1/2"



### SPARE PARTS, February 2014 – now

- 1: Shut-off handle (Order-nr. 47976000)
- 1.1: Cover Cap (Order-nr. 4797400M)
- 2: Temperature limiter (Order-nr. 47977000)
- 3: Aquadimmer (Order-nr. 12433000)
- 4: Water flow (Order-nr. 47751000)
- 5: Temperature control handle (Order-nr. 47978000)
- 5.1: Cover Cap (Order-nr. 4797400M)
- 6: retaining ring (Order-nr. 47743000)
- 7: Thermostatic compact cartridge 1/2" (Order-nr. 47885000)
- 8: Race (Order-nr. 47975000)
- 9: Flow restrictor (Order-nr. 13952000)
- 10: Non-return valve (Order-nr. 08565000)
- 11: Non-return valve (Order-nr. 47189000)
- 11.1: Dirt strainer (Order-nr. 0726400M)
- 11.2: Non-return valve (Order-nr. 08565000)
- 11.3: O-Ring Ø17 x Ø2 (Order-nr. 0305500M)
- 12: S-union (Order-nr. 12075000)
- 12.1: Sealing washer (Order-nr. 0138600M)
- 12.2: Escutcheon (Order-nr. 0221000M)
- 13: Extension 3/4", 20 mm (Order-nr. 0713000M)\*
- 14: Special spanner (Order-nr. 19377000)\*
- 15: Socket spanner (Order-nr. 19332000)\*

\*Special accessories