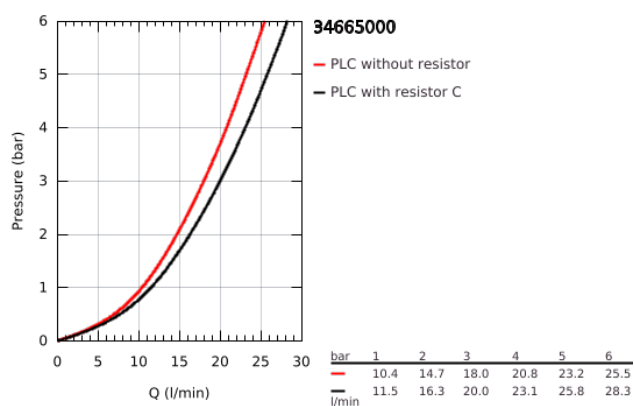


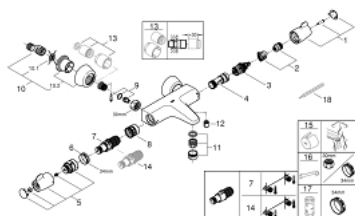
## 34 665 000 GROHTHERM SPECIAL THERMOSTATIC BATH/SHOWER MIXER 1/2"



### PRODUCT DESCRIPTION

- Colour: chrome
- wall mounted
- ergonomic metal wing handles
- Aquadimmer handle with multiple function
- flow control
- integrated mixed water shut off
- diverter bath/shower
- GROHE TurboStat compact cartridge with wax thermoelement
- temperature scale handle with pre-adjustable safety stop between 35°C and 41°C ( calibration required )
- Thermostatic cartridge max.temperature 41°C ( calibration required )
- shower bottom outlet 1/2" with integrated non return-valve
- metal temperature safety stop
- laminar mousseur
- dirt strainers
- with S-unions, chrome nuts and covers
- GROHE FastFixation for fast exchange of non return valves in connections
- 100% GROHE CoolTouch consisting of safety housing + S-unions with CoolTouch escutcheons
- GROHE Long-Life finish
- GROHE SafetyPlus fixed temperature stop

## 34 665 000 GROHTHERM SPECIAL THERMOSTATIC BATH/SHOWER MIXER 1/2"



### SPARE PARTS, July 2015 – now

- 1: Shut-off handle (Order-nr. 49004000)
- 2: Temperature limiter (Order-nr. 47925000)
- 3: Aquadimmer (Order-nr. 12433000)
- 4: Water flow (Order-nr. 47751000)
- 5: Temperature control handle (Order-nr. 49005000)
- 6: retaining ring (Order-nr. 47743000)
- 7: Thermostatic compact cartridge 1/2" (Order-nr. 47439000)
- 7: Thermostatic compact cartridge 1/2" (Order-nr. 47885000)
- 8: Race (Order-nr. 47975000)
- 9: Non-return valves (Order-nr. 47979000)
- 10: S-union (Order-nr. 12058000)
- 10.1: Sealing washer (Order-nr. 0138600M)
- 10.2: Covering escutcheon (Order-nr. 45545000)
- 11: Flow straightener (Order-nr. 49015000)
- 12: Non-return valve (Order-nr. 08565000)
- 13: Extension 30 (Order-nr. 46238000)\*
- 14: GROHE TurboStat cartridge 1/2" (Order-nr. 47175000)\*
- 15: Temperature unlocking handle (Order-nr. 47994000)\*
- 16: Special spanner (Order-nr. 19377000)\*
- 17: Socket spanner (Order-nr. 19332000)\*
- 18: Adjusting thermometer (°C) (Order-nr. 19001000)\*

\*Special accessories