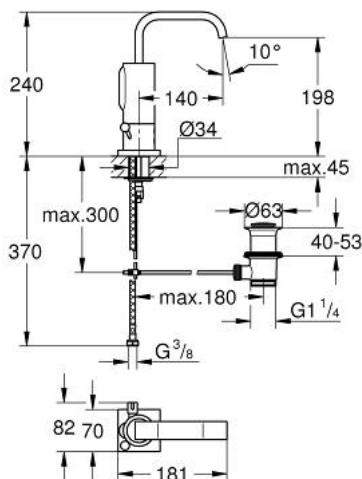
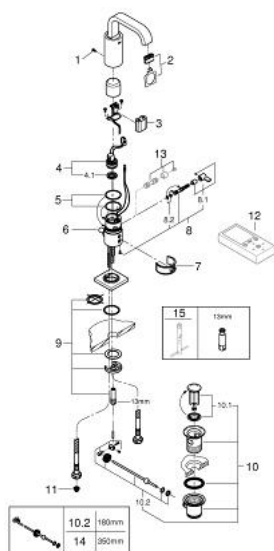


- Colour: chrome
- monobloc installation
- 6V lithium battery, type CR-P2
- GROHE Long-Life finish
- GROHE Water Saving 6.0 l/min. flow limiter
- U spout
- integrated mousseur
- solenoid valve integrated in housing
- pop-up waste set 1 1/4"
- flexible connection hoses
- dirt strainers
- rapid installation system
- multistage battery status display
- automatically stops after 60 sec. (factory set)
- additional functions and precise settings by remote control 36 407
- automatic flushing after 1 or 3 days without use
- thermal desinfection for 3,5 or 11 min
- CE approved
- noise classification 1 in accordance with DIN4109
- type of protection faucet IP 59K



36 234 000 ALLURE E INFRA-RED ELECTRONIC BASIN MIXER 1/2" WITH MIXING DEVICE, ADJUSTABLE TEMPERATURE LIMITER AND WASTE SET



SPARE PARTS, June 2016 – now

- 1: Screw (Order-nr. 4283100M)
- 2: Flow restrictor (Order-nr. 13220000)
- 3: Battery (Order-nr. 42886000)
- 4: Solenoid valve (Order-nr. 42229000)
- 4.1: Dirt strainer (Order-nr. 42798000)
- 5: O-Ring (Order-nr. 4283600M)
- 6: Pop-up rod (Order-nr. 42707000)
- 7: Cleaning clip (Order-nr. 42837000)
- 8: Lever (Order-nr. 42363000)
- 8.1: Mixing lever (Order-nr. 42364000)
- 8.2: O-Ring (Order-nr. 4284000M)
- 9: Fixing set (Order-nr. 42841000)
- 10: Pop-up waste set 1 1/4" (Order-nr. 28910000)
- 10.1: Chrome bath plug (Order-nr. 07182000)
- 10.2: Eccentric rod (Order-nr. 07052000)
- 11: Filter (Order-nr. 4241300M)
- 12: Remote control for all GROHE infra-red products (Order-nr. 36407000)*
- 13: Security cover cap (Order-nr. 36209000)*
- 14: Eccentric rod (Order-nr. 07341000)*
- 15: Mounting wrench (Order-nr. 19017000)*

*Special accessories