

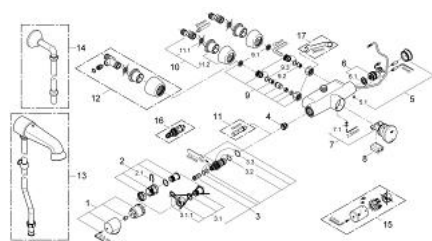
## 36 244 000 EURODISC SE SELF-CLOSING SHOWER THERMOSTAT , 1/2"



### PRODUCT DESCRIPTION

- Colour: chrome
- wall mounted
- 6V lithium battery, type CR-P2
- GROHE Long-Life finish
- GROHE TurboStat compact cartridge with wax thermoelement
- GROHE CoolTouch metal housing
- temperature scale handle with safety stop between 35°C and 45°C
- non-return valve
- dirt strainers
- top outlet 3/4"
- start-stop function
- self-closing electronic
- external access to flow time adjustment
- activation of permanent run for thermal disinfection for 3.5 min
- Automatic flushing: 5 min after 3 days without use
- thermal disinfection for 3,5 or 11 min
- CE approved
- noise classification 1 in accordance with DIN4109
- type of protection IP 69K (planned)
- min. recommended pressure 1.0 bar

## 36 244 000 EURODISC SE SELF-CLOSING SHOWER THERMOSTAT , 1/2"



### SPARE PARTS, June 2008 – now

- 1: Temperature scale handle (Order-nr. 47409000)
- 2: Stop ring (Order-nr. 47641000)
- 2.1: Fixing clamp (Order-nr. 0574400M)
- 3: Thermo-element (Order-nr. 47217000)
- 3.1: Stop ring and regulating nut (Order-nr. 47300000)
- 3.1.1: Fixing clamp (Order-nr. 0574400M)
- 3.2: O-Ring Ø21 x Ø2 (Order-nr. 0599900M)
- 3.3: O-Ring Ø24 x Ø2 (Order-nr. 0119600M)
- 4: Thermostat seat (Order-nr. 01460000)
- 5: Shield for cross handle (Order-nr. 43384000)
- 5.1: Screw (Order-nr. 4346200M)
- 6: Solenoid valve (Order-nr. 42323000)
- 6.1: Dirt strainer (Order-nr. 42798000)
- 7: Cartridge (Order-nr. 43497000)
- 7.1: Screw (Order-nr. 4346200M)
- 8: Battery (Order-nr. 42886000)
- 9: Screw joint (Order-nr. 47643000)
- 9.1: Dirt strainer (Order-nr. 0726400M)
- 9.2: Non-return valve (Order-nr. 08565000)
- 9.3: O-Ring Ø17 x Ø2 (Order-nr. 0305500M)
- 10: S-union (Order-nr. 12058000)
- 10.1: Sealing washer (Order-nr. 0138600M)
- 10.2: Covering escutcheon (Order-nr. 45545000)
- 11: Socket spanner (Order-nr. 19070000)\*
- 12: S-union (Order-nr. 12051000)\*
- 13: Head shower combination (Order-nr. 36248000)\*
- 14: Wall union, male 1/2" (Order-nr. 12407000)\*
- 15: Metal handle temperature control (Order-nr. 47763000)\*
- 16: Thermostatic cartridge for reverse waterways (Order-nr. 47657000)\*
- 17: Special spanner (Order-nr. 19377000)\*

\*Special accessories