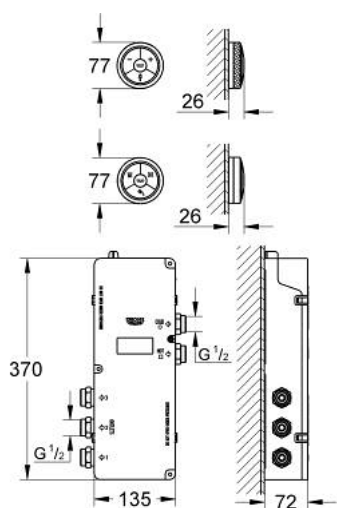


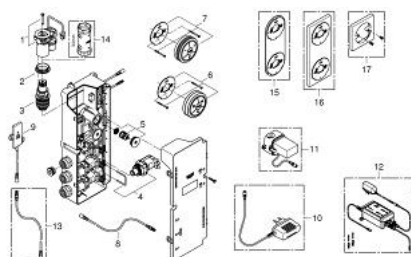
## 36 295 000 F-DIGITAL DIGITAL CONTROLLER AND DIGITAL DIVERTER FOR SHOWER



### PRODUCT DESCRIPTION

- Colour: chrome
- includes digital thermostat unit
- Digital Controller - intuitive multifunctional operating unit
- - Wireless technology
- - Temperature and flow control
- - Pause-function
- - Memory function
- - LED ring incl. warming-up function: visual feedback when preferred temperature is reached
- digital diverter for shower
- - Diverter: head-, side- and hand shower
- - LED ring (indication of outlet)
- digital thermostat unit (concealed body)
- - warm/cold-supplies 1/2"
- - 3 outlets 1/2" shower diverter
- default setting configurable during installation
- - automatic safety shut-off after 20 min
- GROHE SafeStop safety button at 38°C
- transceiver unit for Digital Controller and Digital thermostat unit incl. cable 3 m
- GROHE TurboStat digitally controlled compact cartridge with wax thermoelement
- GROHE Long-Life finish
- GROHE Water Saving - Less water, perfect flow
- requires:
- built-in power supply 36 078 000
- min. recommended pressure 1.0 bar

## 36 295 000 F-DIGITAL DIGITAL CONTROLLER AND DIGITAL DIVERTER FOR SHOWER



### SPARE PARTS, March 2015 – now

- 1: MOTOR (Order-nr. 42337000)
- 2: retaining ring (Order-nr. 47765000)
- 3: Thermostatic compact cartridge 3/4" (Order-nr. 47881000)
- 4: Solenoid valve (Order-nr. 42340000)
- 5: Non-return valve (Order-nr. 47753000)
- 6: Remote control (Order-nr. 48113000)
- 7: Digital Controller
- Remote Controller for bath or shower (Order-nr. 36309000)
- 8: Connection wire (Order-nr. 47727000)
- 9: Transceiver (Order-nr. 36356000)
- 10: Plug power supply 230 V (Order-nr. 65790000)\*
- 11: Plug power supply 110-240 V (Order-nr. 36078000)\*
- 12: Uninterruptible power supply (Order-nr. 36394000)\*
- 13: Connection wire (Order-nr. 65815000)\*
- 14: Socket spanner (Order-nr. 19332000)\*
- 15: Holder plate for Digital Controller & Digital Diverter (Order-nr. 40479000)\*
- 16: Holder plate for Digital Controller & Digital Diverter (Order-nr. 40548000)\*
- 17: Holder plate for Digital Controller (Order-nr. 40710000)\*

\*Special accessories