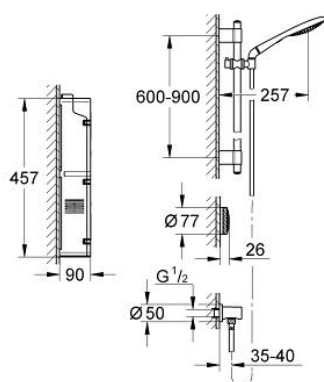


36 303 000 RAINSHOWER SOLO F-DIGITAL SHOWER SET

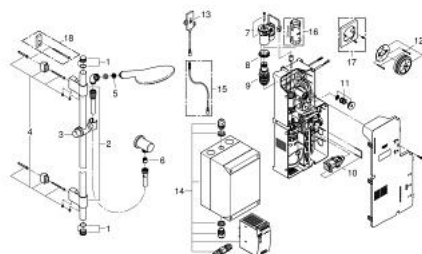


PRODUCT DESCRIPTION

- Colour: chrome
- includes digital thermostat unit
- Digital Controller - intuitive multifunctional operating unit
- - Wireless technology
- - Temperature and flow control
- - Pause-function
- - Memory function
- - LED ring incl. warming-up function: visual feedback when preferred temperature is reached
- digital thermostat unit (concealed body)
- - warm/cold-supplies 1/2"
- - 1 outlet 1/2"
- - with pump and build-in power supply 110-240 V / operating voltage 24 V / cable length 400 m
- Rainshower Solo shower set (27 273 001)
- Rainshower wall union 1/2" (27 057 000)
- transceiver unit for Digital Controller and Digital thermostat unit incl. cable 3 m
- GROHE TurboStat digitally controlled compact cartridge with wax thermoelement
- default setting configurable during installation
- - automatic safety shut-off after 20 min
- GROHE SafeStop safety button at 38°C
- GROHE Long-Life finish
- GROHE Water Saving - Less water, perfect flow
- recommended pressure 0.1 - 1.0 bar



36 303 000 RAINSHOWER SOLO F-DIGITAL SHOWER SET



SPARE PARTS, March 2015 – now

- 1: Cover Cap (Order-nr. 45922000)
- 2: Outlet shower holder (Order-nr. 0666700M)
- 3: Sliding piece (Order-nr. 06765000)
- 4: Fixing set (Order-nr. 45403000)
- 5: Strainer (Order-nr. 0700200M)
- 6: Non-return valve (Order-nr. 08565000)
- 7: MOTOR (Order-nr. 42337000)
- 8: retaining ring (Order-nr. 47765000)
- 9: Thermostatic compact cartridge 3/4" (Order-nr. 47881000)
- 10: Solenoid valve (Order-nr. 42340000)
- 11: Non-return valve (Order-nr. 47753000)
- 12: Digital Controller
- Remote Controller for bath or shower (Order-nr. 36309000)
- 13: Transceiver (Order-nr. 36356000)
- 14: power supply unit UK (Order-nr. 48209000)
- 15: Connection wire (Order-nr. 65815000)*
- 16: Socket spanner (Order-nr. 19332000)*
- 17: Holder plate for Digital Controller (Order-nr. 40710000)*
- 18: Spacer (Order-nr. 45914XE0)*

*Special accessories