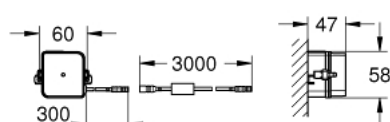


37 504 000 TECTRON SKATE BLUETOOTH INFRA-RED ELECTRONIC FOR WC



PRODUCT DESCRIPTION (1/2)

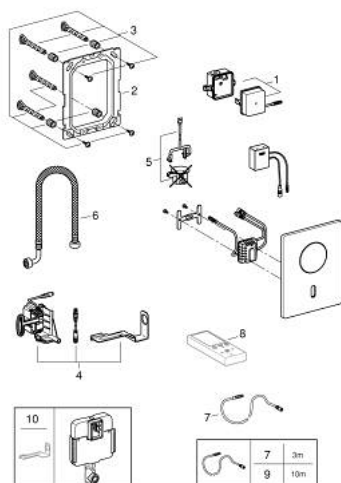
- Colour: chrome
- for flushing cistern GD 2 / Rapid SL 1.13 m only
- with transformer 100-240 V AC, 50-60 Hz, 6.75 V DC
- with infrared sensor and Bluetooth module for bi-directional communication for monitoring, configuration and service purpose
- with additional manual actuation
- GROHE Long-Life finish
- front plate 156 x 197 mm
- servo motor
- for use with Rapid SLX please order shaft 66 791 000 (sold separately)
- with Bluetooth 4.0* for wireless data communication
- for Apple** and Android devices
- Bluetooth range (max. 10 m) varies depending on materials used and walls between transmitter and receiver
- monitoring
- password protected products
- app detects all Bluetooth products in range
- auto flush cycles and timing last auto flush
- usage per day over 30 days
- configuration
- detection range and shut off delay
- auto flush
- cleaning mode
- 2 on/off timers
- identification by name
- service
- send and save 3 profiles
- reset to factory or user settings
- hard and software version
- CE approved
- Mobile devices and GROHE IR Remote App*** are not included in delivery and have to be ordered separately via an authorised Apple store/store/iTunes or Google Play store.

37 504 000 **TECTRON SKATE BLUETOOTH INFRA-RED ELECTRONIC FOR WC**

PRODUCT DESCRIPTION (2/2)

- * The Bluetooth word mark and logos are registered trademarks owned by Bluetooth SIG, Inc. and any use of such marks by Grohe AG is under license. Other trademarks and trade names are those of their respective owners.
- ** Apple, the Apple logo, iPod, iPod Touch, iPhone and iTunes are trademarks of Apple Inc., registered in the U.S. and other countries. Apple is not responsible for the function of this device or its compliance with safety and regulatory standards
- *** Available for free via iTunes app or Google Play store.

37 504 000 TECTRON SKATE BLUETOOTH INFRA-RED ELECTRONIC FOR WC



SPARE PARTS, May 2023 – now

- 1: Switching power supply (Order-nr. 42470000)
- 2: Frame (Order-nr. 42736000)
- 3: Fixing set (Order-nr. 4215800M)
- 4: servomotor (Order-nr. 42612000)
- 5: Pop-up rod for servo motor (Order-nr. 43306000)
- 6: Hose (Order-nr. 43307000)
- 7: Extension cable (Order-nr. 36221000)
- 8: Remote control (Order-nr. 36407001)*
- 9: Extension cable (Order-nr. 36222000)*
- 10: Motor support device (Order-nr. 43617000)*

*Special accessories