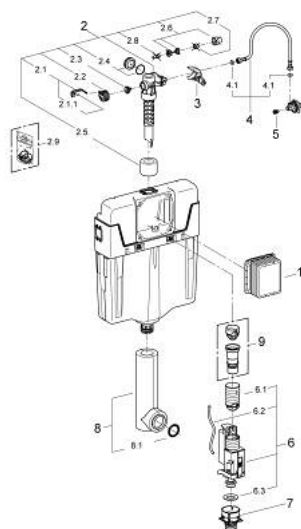


## 38 661 000 WC CONCEALED CISTERN

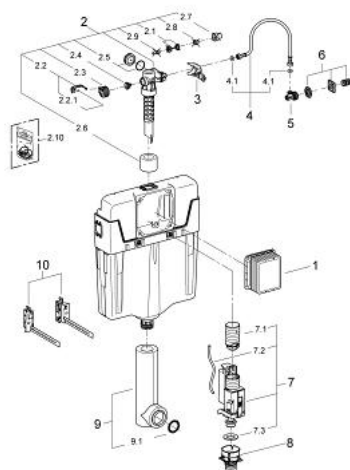


### SPARE PARTS, November 2012 – now

- 1: Inspection shaft (Order-nr. 66783000)
- 2: Filling valve for Bau and Euro Ceramic (Order-nr. 37095000)
- 2.1: Lever (Order-nr. 43734000)
- 2.1.1: Sealing washer (Order-nr. 4377000M)
- 2.2: Valve head (Order-nr. 43536000)
- 2.3: Membrane (Order-nr. 4375800M)
- 2.4: Screw cap (Order-nr. 43735000)
- 2.5: Valve FLOAT, 5 pcs.. (Order-nr. 4379100M)
- 2.6: Set of seals (Order-nr. 43722000)\*
- 3: Support device (Order-nr. 42246000)
- 4: Connecting hose (Order-nr. 42233000)
- 4.1: O-Ring (Order-nr. 0319100M)
- 5: Headpart (Order-nr. 42385000)
- 6: Dual Flush discharge valve AV1 (Order-nr. 42320000)
- 6.1: Extension for overflow pipe (Order-nr. 42313000)
- 6.2: Pneumatic hose (Order-nr. 42319000)
- 6.3: Sealing washer (Order-nr. 42310000)
- 7: Valve seat for GD2 (Order-nr. 42315000)
- 8: Flush pipe, concealed (Order-nr. 43908000)
- 8.1: O-Ring (Order-nr. 4388000M)
- 9: 4.5 l adapter for GD2 (Order-nr. 42333000)\*

\*Special accessories

## 38 661 000 WC CONCEALED CISTERN

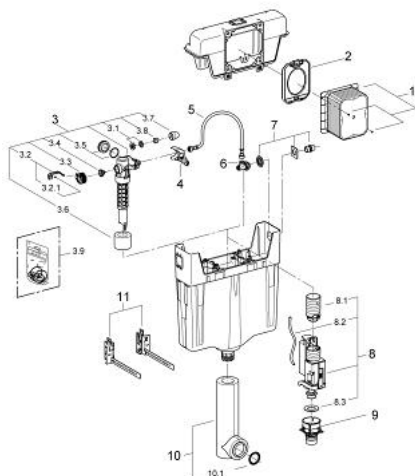


### SPARE PARTS, November 2009 – November 2012

- 1: Inspection shaft (Order-nr. 66783000)
- 2: Filling valve for Bau and Euro Ceramic (Order-nr. 37095000)
- 2.1: Lever (Order-nr. 43734000)
- 2.1.1: Sealing washer (Order-nr. 4377000M)
- 2.2: Valve head (Order-nr. 43536000)
- 2.3: Membrane (Order-nr. 4375800M)
- 2.4: Screw cap (Order-nr. 43735000)
- 2.5: Valve FLOAT, 5 pcs.. (Order-nr. 4379100M)
- 2.6: Set of seals (Order-nr. 43722000)\*
- 3: Support device (Order-nr. 42246000)
- 4: Connecting hose (Order-nr. 42233000)
- 4.1: O-Ring (Order-nr. 0319100M)
- 5: Service valve pack 10 (Order-nr. 42235000)
- 6: water supply (Order-nr. 42234000)
- 7: Dual Flush discharge valve AV1 (Order-nr. 42320000)
- 7.1: Extension for overflow pipe (Order-nr. 42313000)
- 7.2: Pneumatic hose (Order-nr. 42319000)
- 7.3: Sealing washer (Order-nr. 42310000)
- 8: Valve seat for GD2 (Order-nr. 42315000)
- 9: Flush pipe, concealed (Order-nr. 43908000)
- 9.1: O-Ring (Order-nr. 4388000M)
- 10: Wall fixing (Order-nr. 4268400M)

\*Special accessories

## 38 661 000 WC CONCEALED CISTERN

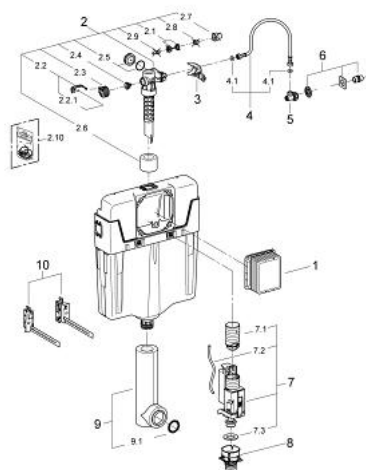


### SPARE PARTS, June 2008 – November 2009

- 1: Inspection shaft for GD2 in Uniset (Order-nr. 42325000)
- 2: Protective plate (Order-nr. 42231000)
- 3: Filling valve for Bau and Euro Ceramic (Order-nr. 37095000)
- 3.1: Lever (Order-nr. 43734000)
- 3.1.1: Sealing washer (Order-nr. 4377000M)
- 3.2: Valve head (Order-nr. 43536000)
- 3.3: Membrane (Order-nr. 4375800M)
- 3.4: Screw cap (Order-nr. 43735000)
- 3.5: Valve FLOAT, 5 pcs.. (Order-nr. 4379100M)
- 3.6: Set of seals (Order-nr. 43722000)\*
- 4: Support device (Order-nr. 42246000)
- 5: Connecting hose (Order-nr. 42233000)
- 5.1: O-Ring (Order-nr. 0319100M)
- 6: Service valve pack 10 (Order-nr. 42235000)
- 7: water supply (Order-nr. 42234000)
- 8: Dual Flush discharge valve AV1 (Order-nr. 42320000)
- 8.1: Extension for overflow pipe (Order-nr. 42313000)
- 8.2: Pneumatic hose (Order-nr. 42319000)
- 8.3: Sealing washer (Order-nr. 42310000)
- 9: Valve seat for GD2 (Order-nr. 42315000)
- 10: Flush pipe, concealed (Order-nr. 43908000)
- 10.1: O-Ring (Order-nr. 4388000M)
- 11: Wall fixing (Order-nr. 4268400M)

\*Special accessories

## 38 661 000 WC CONCEALED CISTERN

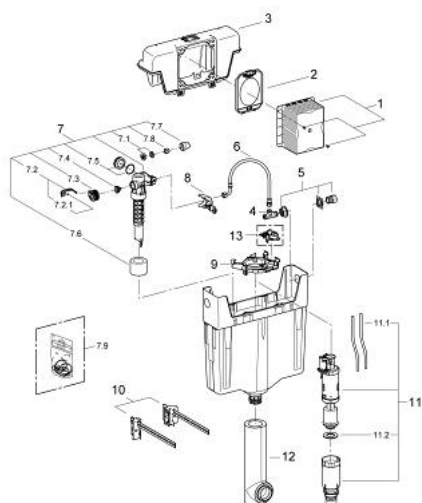


### SPARE PARTS, August 2007 – June 2008

- 1: Inspection shaft for GD2 in Uniset (Order-nr. 42325000)
- 2: Protective plate (Order-nr. 42231000)
- 3: Lid (Order-nr. 42230000)
- 4: Filling valve for Bau and Euro Ceramic (Order-nr. 37095000)
- 4.1: Lever (Order-nr. 43734000)
- 4.1.1: Sealing washer (Order-nr. 4377000M)
- 4.2: Valve head (Order-nr. 43536000)
- 4.3: Membrane (Order-nr. 4375800M)
- 4.4: Screw cap (Order-nr. 43735000)
- 4.5: Valve FLOAT, 5 pcs.. (Order-nr. 4379100M)
- 4.6: Set of seals (Order-nr. 43722000)\*
- 5: Support device (Order-nr. 42246000)
- 6: Connecting hose (Order-nr. 42233000)
- 6.1: O-Ring (Order-nr. 0319100M)
- 7: Service valve pack 10 (Order-nr. 42235000)
- 8: water supply (Order-nr. 42234000)
- 9: Dual Flush discharge valve AV1 (Order-nr. 42320000)
- 9.1: Extension for overflow pipe (Order-nr. 42313000)
- 9.2: Pneumatic hose (Order-nr. 42319000)
- 9.3: Sealing washer (Order-nr. 42310000)
- 10: Valve seat for GD2 (Order-nr. 42315000)
- 11: Flush pipe (Order-nr. 42685000)
- 12: Wall fixing (Order-nr. 4268400M)

\*Special accessories

## 38 661 000 WC CONCEALED CISTERN



### SPARE PARTS, September 2003 – August 2007

- 1: Inspection shaft (Order-nr. 42244000)
- 2: Protective plate (Order-nr. 42231000)
- 3: Lid (Order-nr. 42230000)
- 4: Service valve pack 10 (Order-nr. 42235000)
- 5: water supply (Order-nr. 42234000)
- 6: Connecting hose (Order-nr. 42233000)
- 6.1: O-Ring (Order-nr. 0319100M)
- 7: Filling valve for Bau and Euro Ceramic (Order-nr. 37095000)
- 7.1: Lever (Order-nr. 43734000)
- 7.1.1: Sealing washer (Order-nr. 4377000M)
- 7.2: Valve head (Order-nr. 43536000)
- 7.3: Membrane (Order-nr. 4375800M)
- 7.4: Screw cap (Order-nr. 43735000)
- 7.5: Valve FLOAT, 5 pcs.. (Order-nr. 4379100M)
- 7.6: Set of seals (Order-nr. 43722000)\*
- 8: Support device (Order-nr. 42246000)
- 9: Traverse member (Order-nr. 42682000)
- 10: Wall fixing (Order-nr. 4268400M)
- 11: Dual Flush discharge valve AV1 (Order-nr. 42253000)
- 11.1: Tubes (Order-nr. 42775000)
- 11.2: Seal for discharge valve (Order-nr. 43962000)
- 12: Flush pipe (Order-nr. 42685000)
- 13: Support device GD 2 (Order-nr. 42683000)\*

\*Special accessories