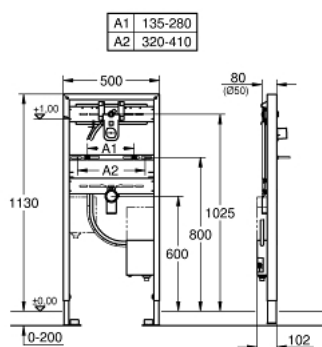


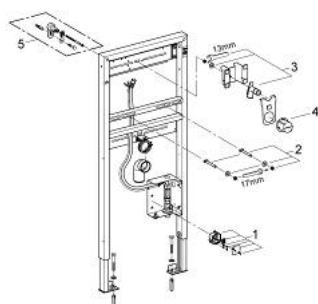
38 748 001 **RAPID SL FOR BASIN**



PRODUCT DESCRIPTION

- for wall mounted fittings
- with Roughing-in Set for infra-red electronic Essence E 36 252 000 and Allure E 36 235 000
- 1.13 m finished installation height
- for on-the-wall installations or studed walls
- powder coated steel frame
- self-supporting
- for dry-cladding, completely pre-assembled
- quick adjustment, lockable
- fixing material
- Includes wash basin fixing bolts with fixing device for ceramic
- variable distance of fixing bolts
- HT-outlet bend Ø 50 mm
- seal Ø 32 mm
- pre-mounted roughing-in set with protecting block
- fire-proof pipe for laying electronic cables
- installation box with water group, stop valve and flush elbow
- connection with noise protected fitting holder ½"
- connecting box for mains supply 230 V
- CE approved
- for installation with pre-mixed or cold water
- wall brackets **38 558 00M (pair) not included and must be ordered separately**

38 748 001 **RAPID SL FOR BASIN**



SPARE PARTS, October 2012 – now

1: Transformer connecting box (Order-nr. 42279000)

2: Threaded bolt (Order-nr. 42247000)

3: Fitting connection (Order-nr. 42944000)

4: Inspection shaft (Order-nr. 42398000)

5: Front wall brackets (Order-nr. 3855800M)*

*Special accessories