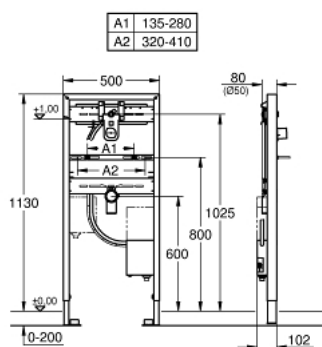
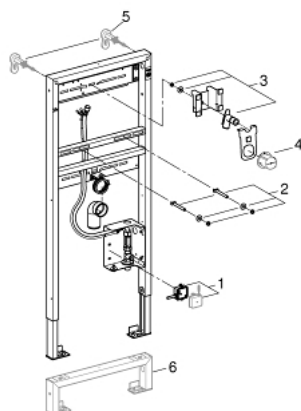


A blue metal frame assembly, likely for a machine. It features a white control unit at the top with a green emergency stop button. A black cable runs from the control unit down to a white box at the bottom. The frame has several horizontal bars and a small red button on the right side.

- for wall mounted fittings
- suitable for trim sets Europlus E 36 042 SD0, Essence E 36 447 000 and Eurocube E 36 442 000
- 1.13 m finished installation height
- for on-the-wall installations or studed walls
- powder coated steel frame, self-supporting
- for dry-cladding, completely pre-assembled
- quick adjustment, lockable
- fixing material
- Includes wash basin fixing bolts with fixing device for ceramic
- variable distance of fixing bolts
- HT-outlet bend Ø 50 mm
- seal Ø 32 mm
- pre-mounted roughing-in set with protecting block
- fire-proof pipe for laying electronic cables
- installation box with water group, stop valve and flush elbow
- connection with noise protected fitting holder ½"
- connecting box for mains supply 230 V
- CE approved
- for installation with pre-mixed or cold water
- for on-the-wall installation please order wall brackets 38 558 00M (sold separately)



38 748 002 **RAPID SL ELEMENT FOR WASH BASIN WITH ROUGHIN-IN SET FOR INFRA-RED ELECTRONIC**



SPARE PARTS, September 2016 – now

1: Switching power supply (Order-nr. 42470000)

2: Threaded bolt (Order-nr. 42247000)

3: Fitting connection (Order-nr. 42944000)

4: Inspection shaft (Order-nr. 42398000)

5: Front wall brackets (Order-nr. 3855800M)*

6: Flush pipe extension (Order-nr. 38629000)*

*Special accessories