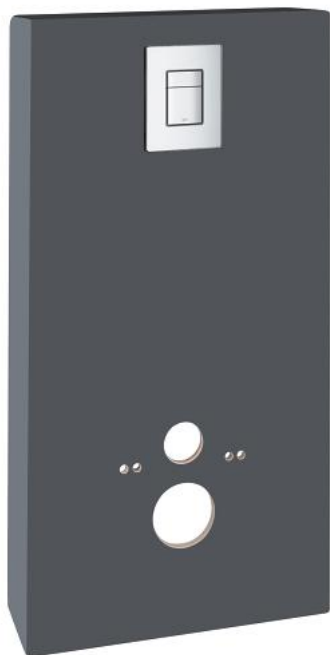
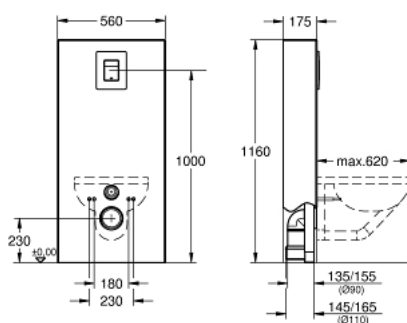


39 377 X10 **SOLIDO MONOBLOC**

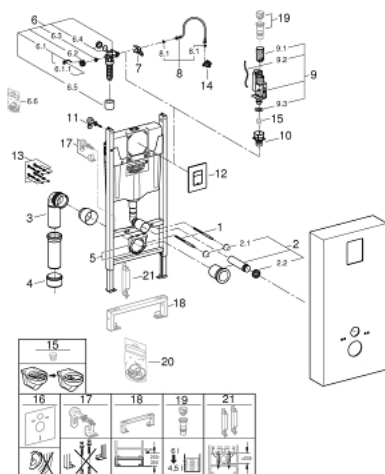


PRODUCT DESCRIPTION

- Colour: slate grey
- 1.13 m finished installation height
- for against-the-wall installations
- powder coated steel frame, self-supporting
- quick adjustment, lockable
- fixing material
- 2 WC fixing bolts
- fixing device for ceramic
- distance of fixing bolts 180/230 mm
- depth adjustable
- inlet and outlet connecting set
- flushing cistern GD 2, 6 - 3 l
- factory set 6 l and 3 l
- pneumatic discharge valve offering 2 modes of operation: dual flush or start/stop
- water supply from left/right or back
- low noise (group I acc. to German Noise Specification)
- insulated against condensation
- ½" water supply connection including integrated angle valve and push fit flexible hose union
- no tools required for the installation of the inspection shaft including protection during construction phase
- for vertical use
- with fixing material
- including acrylic cover
- slate grey
- Skate Cosmopolitan flush plate
- chrome



39 377 X10 **SOLIDO MONOBLOC**



SPARE PARTS, November 2021 – now

- 1: Threaded bolt (Order-nr. 4276400M)
- 2: WC inlet and outlet connecting set (Order-nr. 37311K00)
- 2.1: Basin fastening (Order-nr. 43511SH0)
- 2.2: Connector (Order-nr. 37119000)
- 3: PP-outlet bend Ø 90 mm (Order-nr. 42327000)
- 4: 4" outlet adaptor for Rapid SL (Order-nr. 42242000)
- 5: Support for outlet bend (Order-nr. 42243000)
- 6: Filling valve for Bau and Euro Ceramic (Order-nr. 42583000)
- 6.1: Lever (Order-nr. 43734000)
- 6.1.1: Sealing washer (Order-nr. 4377000M)
- 6.2: Valve head (Order-nr. 43536000)
- 6.3: Membrane (Order-nr. 4375800M)
- 6.4: Screw cap (Order-nr. 43735000)
- 6.5: Valve FLOAT, 5 pcs.. (Order-nr. 4379100M)
- 6.6: Set of seals (Order-nr. 43722000)*
- 7: Support device (Order-nr. 42246000)
- 8: Connecting hose (Order-nr. 42233000)
- 8.1: O-Ring (Order-nr. 0319100M)
- 9: Dual Flush discharge valve AV1 (Order-nr. 42320000)
- 9.1: Extension for overflow pipe (Order-nr. 42313000)
- 9.2: Pneumatic hose (Order-nr. 42319000)
- 9.3: Sealing washer (Order-nr. 42310000)
- 10: Valve seat for GD2 (Order-nr. 42315000)
- 11: Front wall brackets (Order-nr. 3855800M)
- 12: Top plate with push button (Order-nr. 42371P00)
- 13: Fixing set (Order-nr. 4215800M)
- 14: Water connection (Order-nr. 48561000)
- 15: Flow restrictor (Order-nr. 42300000)*
- 16: Set for noise protection (Order-nr. 37131000)*
- 17: Xtra wall brackets, flexible placing (Order-nr. 38733000)*
- 18: Flush pipe extension (Order-nr. 38629000)*
- 19: 4.5 l adapter for GD2 (Order-nr. 42333000)*
- 20: Set of seals (Order-nr. 43722000)*
- 21: Accessory (Order-nr. 38779000)*

*Special accessories