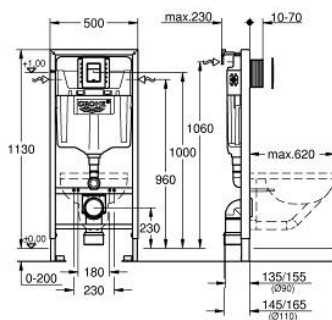


39 501 20A **RAPID SL 3-IN-1 SET FOR WC, 1.13 M INSTALLATION HEIGHT**

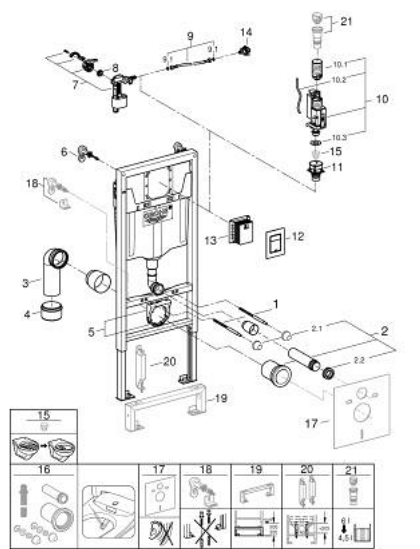


PRODUCT DESCRIPTION

- Colour: chrome
- with flushing cistern GD 2 , 6 l - 9 l
- including WRAS approved filling valve
- consisting of:
- Rapid SL element for WC (38 528 001)
- Skate Cosmopolitan S flush plate, chrome (37 535 000)
- wall brackets (38 558 00M)
- including revision shaft 40 911 000 for mounting of small flush plates



39 501 20A **RAPID SL 3-IN-1 SET FOR WC, 1.13 M INSTALLATION HEIGHT**



SPARE PARTS, August 2023 – now

- 1: Threaded bolt (Order-nr. 4276400M)
- 2: WC inlet and outlet connecting set (Order-nr. 37311K00)
- 2.1: Basin fastening (Order-nr. 43511SH0)
- 2.2: Connector (Order-nr. 37119000)
- 3: PP-outlet bend Ø 90 mm (Order-nr. 42327000)
- 4: 4" outlet adaptor for Rapid SL (Order-nr. 42242000)
- 5: Support for outlet bend (Order-nr. 42243000)
- 6: Front wall brackets (Order-nr. 3855800M)
- 7: Filling valve for Bau and Euro Ceramic (Order-nr. 42648000)
- 8: Membrane (Order-nr. 4265000M)
- 9: Connecting hose (Order-nr. 42233000)
- 9.1: O-Ring (Order-nr. 0319100M)
- 10: Dual Flush discharge valve AV1 (Order-nr. 42320000)
- 10.1: Extension for overflow pipe (Order-nr. 42313000)
- 10.2: Pneumatic hose (Order-nr. 42319000)
- 10.3: Sealing washer (Order-nr. 42310000)
- 11: Valve seat (Order-nr. 42599000)
- 12: Flush plate (Order-nr. 37535000)
- 13: Inspection shaft for small flush plates (Order-nr. 40911000)
- 14: Water connection (Order-nr. 48561000)
- 15: Flow restrictor (Order-nr. 42300000)*
- 16: Retrofit kit for shower toilets Sensia Arena and IGS (Order-nr. 40899000)*
- 17: Set for noise protection (Order-nr. 37131000)*
- 18: Xtra wall brackets, flexible placing (Order-nr. 38733000)*
- 19: Extension for Rapid SL and Rapid SLX (Order-nr. 38629001)*
- 20: Accessory (Order-nr. 38779000)*
- 21: 4.5 l adapter for GD2 (Order-nr. 42333000)*

*Special accessories