

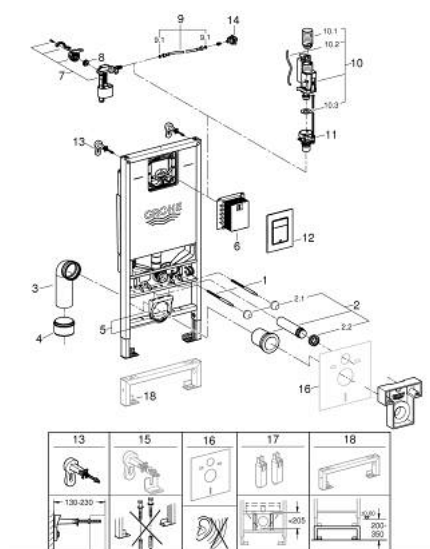
## 39 603 20A **RAPID SLX 3-IN-1 SET FOR WC, 1.13 M INSTALLATION HEIGHT**

### PRODUCT DESCRIPTION

- Colour: chrome
- flushing cistern GDX, 6 l
- including WRAS approved filling valve
- consisting of:
  - Rapid SLX element for WC (39 596 000) with integrated power socket
  - Skate Cosmopolitan S flush plate, chrome (37 535 000)
  - wall brackets (38 558 00M)
  - including flow manager



## 39 603 20A **RAPID SLX 3-IN-1 SET FOR WC, 1.13 M INSTALLATION HEIGHT**



### SPARE PARTS, August 2023 – now

- 1: Threaded bolt (Order-nr. 4276400M)
- 2: WC inlet and outlet connecting set (Order-nr. 37311K00)
- 2.1: Basin fastening (Order-nr. 43511SH0)
- 2.2: Connector (Order-nr. 37119000)
- 3: PP-outlet bend Ø 90 mm (Order-nr. 42327000)
- 4: 4" outlet adaptor for Rapid SL (Order-nr. 42242000)
- 5: Support for outlet bend (Order-nr. 42243000)
- 6: Inspection shaft for small flush plates (Order-nr. 40911000)
- 7: Filling valve for Bau and Euro Ceramic (Order-nr. 42648000)
- 8: Membrane (Order-nr. 4265000M)
- 9: Connecting hose (Order-nr. 42233000)
- 9.1: O-Ring (Order-nr. 0319100M)
- 10: Dual Flush discharge valve AV1 (Order-nr. 42320000)
- 10.1: Extension for overflow pipe (Order-nr. 42313000)
- 10.2: Pneumatic hose (Order-nr. 42319000)
- 10.3: Sealing washer (Order-nr. 42310000)
- 11: Valve seat (Order-nr. 42593000)
- 12: Flush plate (Order-nr. 37535000)
- 13: Front wall brackets (Order-nr. 3855800M)
- 14: Water connection (Order-nr. 48561000)
- 15: Xtra wall brackets, flexible placing (Order-nr. 38733000)\*
- 16: Set for noise protection (Order-nr. 37131000)\*
- 17: Accessory (Order-nr. 39607000)\*
- 18: Extension for Rapid SL and Rapid SLX (Order-nr. 38629001)\*

\*Special accessories